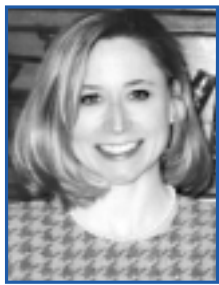


# Psychology GIVING

## Hunter-Williams Selected First Educational Assessment Congressional Fellow

This fall **Jill Hunter-Williams, Ph.D.**, becomes the first Educational Assessment Congressional Fellow, thanks to the support from Harcourt Assessment, Inc. (formerly The Psychological Corporation).



**JILL HUNTER-WILLIAMS, Ph.D.**

Dr. Hunter-Williams is conducting research on issues related to organizational norms and policies affecting school-community partnerships and organizational climate related to sexual harassment, as well as consulting with the Association for the Study and Development of Community related to the Office of Juvenile Justice and Delinquency Prevention's Safe Start Initiative. Her research and policy interests include educational assessment, child development, and prevention. She received her Ph.D. in clinical/community psychology from the University of Illinois at Urbana-Champaign.

Dr. Hunter-Williams will spend one year working as a special legislative assistant on the staff of a member of Congress or congressional committee. Activities may involve legislative or oversight work, assisting in congressional hearings and debates, and preparing briefs and writing speeches. She will attend the American Association for the Advancement of Science's orientation program on congressional and executive branch operations, which includes guidance in the congressional placement process, and a year-long seminar series on science and public policy issues.

Harcourt Assessment partnered with APF to create the fellowship for individuals with a strong background in educational assessment, testing, and related issues. The program contributes to the

more effective use of psychological knowledge in government and broadens awareness about the value of psychology-government interaction among psychologists and within the federal government.

"We are pleased to support the American Psychological Foundation and the important work it does to raise awareness of mental health and psychology in American society," said Aurelio Prifitera, publisher of Harcourt Assessment. "The congressional fellowship program is a vital extension of the Foundation's mission that will contribute greatly to the development of public policy in the areas of psychology and assessment."

Dr. Hunter-Williams recently took the time to answer our questions about the fellowship.

### Why did you apply for this fellowship?

As a clinical-community psychologist, my professional activities have centered on understanding how environmental systems affect individuals – particularly children and families – and using this knowledge to develop preventive interventions that promote individual, organizational, and community competencies. The ability to conceptualize and formulate public policies at multiple levels of analysis (e.g., organization, state, nation) is very important for these activities. Most of my experience to date falls at the level of organizational policy. The fellowship supplements my training by giving me the opportunity to influence policies at the national level. This is very exciting because national policies are uniquely suited to address central variables affecting large numbers of children.

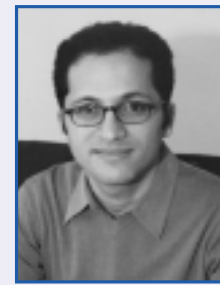
*Continued on Page 2*

## Life Insurance Gift Will Fund Congressional Fellowship

An anonymous donor has purchased a \$500,000 life insurance policy for APF, the proceeds of which will go toward funding a Congressional Fellow trained in developmental psychology. The donor wishes to enhance the efforts of psychologists who are dedicated to the constructive application of psychological knowledge to public policies affecting children. "We are truly proud to be able to offer a Congressional Fellowship for such important work," said Elisabeth Straus, APF Executive Vice President/Executive Director. "This gift will perpetuate the donor's life's work, and we hope that others will find life insurance gifts helpful in their estate planning and in their tax savings."

Donate to APF online at [www.apa.org/apf](http://www.apa.org/apf)

## First APF Weiss Grant Examines Racial and Gender Stereotypes



**MICHAEL INZLICHT, Ph.D.**

**Michael Inzlicht, Ph.D.**, received the first APF Raymond A. and Rosalee G. Weiss Innovative Research and Programs Grant of \$10,000 for his proposal, *Threatening Environments: How the Racial or Gender Makeup of a Classroom Affects Self-Control*.

Dr. Inzlicht will examine how the racial and gender compositions of ad hoc laboratory groups and kindergarten through twelfth-grade classrooms can impact the self-control and intellectual performance of female math students and of Black students more generally. In addition, he will conduct an intervention that teaches students how to improve their self-control and overcome the barriers present in their everyday environments.

"I value innovation and am therefore very proud to be the first recipient of the Rosalee G. and Raymond A. Weiss Innovation Research Award. While at New York University, I focused on the psychology of stigmatization and stereotypes. My research proposal is a culmination of the questions I've been asking over the course of the past few years, and with the generous support of the Raymond and Rosalee Weiss Innovation Research and Programs Grant I hope to start answering them."

Dr. Inzlicht is an Assistant Professor of Psychology at Wilfrid Laurier University in Waterloo, Canada. He received his Ph.D. in experimental psychology at Brown University in 2001. His project will examine the relationship between threatening intellectual environments and self-control in the lab and in the real world. Inzlicht says, "The representation of African-Americans in higher education and of women in math and science is in crisis."

Dr. Rosalee G. and Dr. Raymond A. Weiss established the Research and Program Innovation Fund in 2003 to encourage creative, cutting-edge psychological endeavors. The Weisses' philanthropy at APF is well-known. They have made a very generous bequest to perpetuate the Innovative Research and Program Fund for generations to come. In addition, they established two lecture series at the APA convention: the Rosalee G. Weiss lecture and the Lynn Stuart Weiss lecture.

## President's Message



**DOROTHY W. CANTOR, Psy.D.**  
President

The Foundation launched its Campaign for a New Era almost five years ago with a goal to raise \$7 million by the end of 2004. With your support, we have already raised \$6.8 million, and we are so close to reaching our goal!

Because of you, my colleagues in psychology, and others interested in our work, we have increased APF's grant-making capacity by more than 120% in the last five years. We now give away more than \$420,000 in scholarships, grants, and awards annually.

To recognize your continued generosity, we have created a Roll of Honor to record the names in posterity of all of you who contribute \$1,000 or more to the campaign. The Roll of Honor is a one-of-a-kind, leather bound book created especially

for this fundraising effort. The book will be on permanent display in the APA headquarters building.

It is not too late to add your name to this growing list of prominent psychologists.

You can pledge over time or contribute \$1,000 or more before the end of 2004 and you will be invited to inscribe your name in the Roll of Honor. If you make a pledge, you will have *five years* in which to fulfill this commitment. Your name will appear in various APF and APA publications, and you will receive invitations to special Foundation receptions and events.

*To join the Roll of Honor, submit your contribution or pledge in the APF envelope provided with this issue. Or you can make your contribution online using our new online donation form at [www.apa.org/apf](http://www.apa.org/apf).*

Every contribution, no matter how big or small, brings us one step closer to reaching our

\$7 million goal. So even if you are unable to make a pledge now, keep the envelope handy for making contributions in someone's honor or memory. Get in the habit of giving to APF, because APF returns so much to psychology.

Thank you for helping us further our mission of advancing the science and practice of psychology for the understanding of behavior and the benefit of human welfare by making a contribution today.

*P.S. Any contributions you have made to APF since 2000 can be credited toward your pledge. Contact Liz Merck at (202) 336-5622 or [emerck@apa.org](mailto:emerck@apa.org) to obtain more information.*

2

## Tovian Named 2004 Outstanding Clinical Health Psychologist



**STEVEN M. TOVIAN, Ph.D., ABPP**

**Steven M. Tovian, Ph.D., ABPP**, is the recipient of the fourth annual American Psychological Foundation Timothy Jeffrey Memorial Award for Outstanding Contributions to Clinical Health Psychology. The award was presented at the American Psychological Association convention in Honolulu in the summer of 2004. Division 38 (Health Psychology) recommended Dr. Tovian as the winner of the award for approval by the APF Board of Trustees.

Louise K. Jeffrey, Ph.D. instituted the award at the Foundation in 2000 to memorialize the career and contributions of her late husband, Timothy Jeffrey, Ph.D., a former president of Division 19 (Military Psychology) and director of the clinical psychology department at the University of Nebraska Medical Center in Omaha. The award recognizes an outstanding commitment to clinical health psychology by a full-time provider of direct clinical services and carries a \$1,000 annual prize.

Dr. Tovian is chief psychologist and director of health psychology at the department of psychiatry and behavioral sciences at Evanston Northwestern Healthcare, Evanston, Illinois. He is associate professor of psychiatry and behavioral sciences at the Feinberg School of Medicine at Northwestern University. Dr. Tovian co-edited the *Handbook of Clinical Psychology in Medical Settings*, co-authored *Psychological Assessment in Medical Settings*, serves on the editorial board of the *Journal of Clinical Psychology in Medical Settings*, and has published numerous book chapters and articles in various areas of clinical health psychology.

## Weick Receives 2004 Levinson Award: Award Encourages Effective, Healthy, and Humane Organizations



**KARL E. WEICK, Ph.D.**

**Karl E. Weick, Ph.D.**, is the 2004 recipient of the Harry and Miriam Levinson Award for Exceptional Contributions to Consulting Organizational Psychology. Weick is best known for his work in the area of information system theory, including communication and organization.

Weick was trained in psychology at Ohio State University, where he received his Ph.D. in 1962. He is currently serving as the Rensis Likert Distinguished University Professor of Organizational Behavior and Psychology at the University of Michigan. Prior to this, he has been associated with the faculties at Purdue University, the University of Minnesota, Cornell University, and the University of Texas. He is a Fellow of the American Psychological Association, the American Psychological Society, the Academy of Management, and the British Academy of Management.

The Levinson Award is given annually to an APA member who has demonstrated exceptional ability to integrate a wide variety of psychological theory and concepts, and to convert that integration into applications by which leaders and managers may create more effective, healthy, and humane organizations. The award is administered by the APA Division Services Office in conjunction with APA Divisions 13 (Consulting Psychology), 14 (Industrial and Organizational Psychology), and 39 (Psychoanalysis). The recipient receives \$5,000 and a certificate of recognition.

## Foundation Awards Grant for Psychosocial Research on Injuries to Children

**Benjamin K. Barton, M.S.**, of the Department of Psychology at the University of Alabama at Birmingham, received the 2004 American Psychological Foundation Lizette Peterson-Homer Memorial Injury Research Grant. Dr. Donald and Marion Routh established this award through a generous gift to the American Psychological Foundation. The award focuses on psychosocial research on injuries to children and young adults through accidents, violence, abuse, or

suicide. Dr. Barton will receive a \$1,000 award as the student whose research design best reflects this focus.

Barton was selected for his proposal, *Children's Self-Selection Into Risky Pedestrian Settings*. His study proposes to examine the roles of four risk factors – age, gender, injury risk, and temperament – in children's risky pedestrian behaviors. The results will expand understanding of the role of children's self-selection behaviors in the etiology of pedestrian

injuries, and may have implications for prevention efforts. The research will help prevention programs target children with a tendency toward risky behaviors and shed light on what prevention efforts might be most effective.

APA Division 54 (The Society of Pediatric Research) solicits nominations and selects annual winners, subject to approval by the APF Board of Trustees.

## Hunter-Williams Selected First Educational Assessment Congressional Fellow, *Cont.*

I was particularly interested in the Educational Assessment Fellowship because it recognizes that helping children requires understanding individuals and the contexts in which they live. When I explain to people how assessment and policy go together, I often use the example of the Individuals With Disabilities Education Act. This law affects which children are identified as learning disabled and identifies the safeguards schools must follow to protect this population of children. Understanding the strengths and limitations of assessment as well as the operation of special education within schools is critical to designing legislation that meets children's needs most effectively.

**What are your goals for public policy and how does the receipt of this fellowship help you to actualize them?**

I am committed to influencing child-related social legislation. As a recent Ph.D., I must decide whether to do so indirectly via research or directly via work

in the social policy domain (e.g., on the Hill or with a social policy agency). The fellowship will help me decide which avenue best fits my interests and skills. It is wonderful that such traineeships exist. There is a bit of a Catch 22 in DC: To get a policy job, one must first have policy experience. The fellowship is a terrific opportunity for me to gain the experience and connections I need to start my policy career. I am very honored to be a fellow, and I look forward to using my knowledge of educational assessment at the policy level.

**What are you most looking forward to in your year as a fellow?**

The Congressional Fellowship offers a unique opportunity to affect the well-being of children and influence child-related policy. I most look forward to helping make an important piece of legislation related to children a reality. What a great feeling to be able to say, "I was a part of that."

## Gerson Grant Advances Understanding of Family and Couple Dynamics



LYNNE M. KNOBLOCH-FEDDERS, Ph.D.

**Lynne M. Knobloch-Fedders, Ph.D.**, a clinical psychologist and Coordinator of Research at the Center for Applied Psychological and Family Studies at The Family Institute at Northwestern University, is the recipient of the 2004 American Psychological Foundation Randy Gerson Memorial Grant.

Sylvia Shellenberger, Ph.D., established this grant in memory of her husband, Randy Gerson. Friends and colleagues of Dr. Gerson continue to contribute to the Gerson Fund at APF.

“I consider it a great honor to be selected, and I am proud to receive this award,” Knobloch-Fedders told APF. “Several of my colleagues at The Family Institute at Northwestern University knew Randy Gerson, and I am delighted to be able to conduct my research following the spirit of his fine work.”

The grant of \$5,000 recognizes and assists researchers and students working to advance systemic understanding of family and couple dynamics and multigenerational processes.

Knobloch-Fedders’s winning research proposal was titled *The Interpersonal Context of Depression in Couples*. In her research, she will apply family systems and interpersonal theory to the study of couples in which one partner is depressed. This research will be the first step in the development of a comprehensive, systemically based assessment and intervention program.

The grant alternates each year between a professional and a graduate student. Next year’s grant will be awarded to a graduate student.

## APF Grants \$6,000 to Outstanding LGB Family Researchers



SONDRA E. SOLOMON, Ph.D.

**Sondra E. Solomon, Ph.D.**, assistant professor of psychology at the University of Vermont, and **Esther D. Rothblum, Ph.D.**, a psychology professor at the University of Vermont and former chair of APA’s Committee on Lesbian and Gay Concerns, are the postdoctoral winners of the fourth annual Roy Scrivner Research Grants competition.

Solomon and Rothblum conducted a study in 2001 that compared three types of couples living in Vermont during the state’s first year of legalized civil unions – same-sex couples in civil unions, same-sex couples not in civil unions, and heterosexual married couples in which one partner was the sibling of a partner in the same-sex couples. They plan to use the grant to follow up with the nearly 1,000 people they surveyed three years ago and analyze which variables predict relationship satisfaction and success. They will also compare and contrast the ways in which the three

types of couples relate to their siblings and parents.

Two doctoral candidates will also receive \$1,000 Scrivner grants for their exemplary dissertation-level research: **Kelly A. Blasko, M.A.**, of the Pennsylvania State University, and **Mary Jane Phillips, M.S.**, of the University of Georgia. Blasko’s research will examine the assessment variables used to identify victims and perpetrators in same-sex domestic violence situations. Phillips will examine parents’ adjustment to having a gay son or a lesbian daughter.

The grants are made possible through a generous bequest from Roy Scrivner, Ph.D., a counseling and clinical psychologist and former president of the Texas Psychological Association. Members of APA Divisions 43 (Family) and 44 (Society for the Psychological Study of Lesbian, Gay, and Bisexual Issues) serve on the Scrivner oversight and awards committees.



KELLY A. BLASKO, M.A.



MARY JANE PHILLIPS, M.S.

## Berg Wins \$75,000 Rosen Grant for Giftedness Research

**W. Keith Berg, Ph.D.**, of the University of Florida, received the 2004 Esther Katz Rosen Grant for Research and Programs on Giftedness in Children. Dr. Berg’s proposal, *A Longitudinal and Microgenetic Study of Problem Solving in Gifted Children*, was selected for funding at \$75,000 over three years.

Dr. Berg, whose previous research has involved using psychophysiological measures to assess attentional and anticipatory processes in infants, will use the Rosen funding to examine whether a child’s ability to plan and strategize – executive brain functions that appear around the age of 3 or 4 are early indicators of giftedness.

The Ester Katz Rosen fund began in 1974 from a bequest to the American Psychological Foundation from Esther Katz Rosen to advance and apply knowledge about gifted children. The fund is administered by the Board of Trustees of the APF to support activities related to the psycholo-

gical understanding of gifted and talented children and adolescents.

The goals of the fund are to nurture excellent scholars in the broad area of the psychology of giftedness; to support scholarly work that contributes to greater understanding and advancement of gifted children, their development, and their needs, as well as effective practices with gifted children; and to provide seed money to establish (or expand in new directions) educational programs or interventions designed for gifted children to meet their academic and/or social needs.

Outstanding  
Achievement



## APF/TOPSS 2004 High School Award Winners

The Executive Committee of the Teachers of Psychology in Secondary Schools (TOPSS) has selected three high school students as the winners of the 2004 APF/TOPSS Scholars Competition: **Jennifer Ledon**, Michael Krop Senior High School, Miami, Florida, *Test Anxiety*; **Erik Paulson**, Sun Prairie High School, Sun Prairie, Wisconsin, *The Effects of Acculturation Within the Parent-Child Relationship*; and **Linda Bravman**, Walt Whitman High School, Bethesda, Maryland, *The Connection Between Culture and Emotional Reaction to a Situation*.

The essay question posed for this year’s competition focused on aspects of American Psychological Association President Dr. Diane Halpern’s interests surrounding international psychology. Students were asked to prepare a research proposal exploring how international dimensions of culture may influence elements of human behavior. Each student receives a scholarship in the amount of \$1,000.

The Executive Committee of TOPSS has also selected four high school

students as the winners of the 2004 APF/TOPSS Excellence in High School Student Research Award: **Anuraag Suhrid Parikh** (First Place), Roslyn High School, Roslyn Heights, New York, *The Effect of Price Level and Price Type on the Perceptions of a Restaurant*; **Michael Sloyer** (Second Place), Roslyn High School, Roslyn Heights, New York, *The Effect Of Visual Images and Power Phrases on Contributions to a Hunger Prevention Charity*; **Samuel Neil** (Third Place), Roslyn High School, Roslyn Heights, New York, *The Impact of Target Music Preference and Gender on First Impressions*; and **Allyson Goldberg** (Fourth Place), Croton-Harmon High School, Croton-on-Hudson, New York, *The Effects of Manipulating Body Core Temperature on Performance and Naps in Humans*.

The awards program recognizes outstanding research projects that fall within the domain of psychology and are conducted by high school students. The monetary awards to be granted to the students are \$1,500 for first place, \$1,000 for second place, \$500 for third place, and \$250 for fourth place.

March 1 through August 31, 2004

- GARY K. ARTHUR, M.D.** — “In memory of Theodore H. Blau, Ph.D.”
- LAURA H. BARBANEL, Ed.D.** — “In memory of Margaret Pribila, mother of Judy Strassburger”
- DR. KATHLEEN BROWN** — “In memory of Dorothy Langdon Siteley, my mother”
- MATHILDA B. CANTER, Ph.D.** — “In memory of Aaron H. Canter;” “In memory of Dr. Alice Chang’s mother;” “In memory of Suzanne Sobel, Ph.D.,” “In memory of Fred Strassburger, Ph.D.”
- DOROTHY W. CANTOR, Psy.D.** — “In memory of Fred Strassburger, Ph.D.,” “In memory of George Taylor”
- DR. MAURY T. CARLIN** — “In memory of Rita Jorrich, MA”
- COMPREHENSIVE PSYCHOLOGICAL SERVICES** — “In memory of Bonnie Isenberg, wife of Dr. Roy Isenberg”
- PATRICK H. DELEON, Ph.D.** — “In memory of Ray Folen’s father”
- DR. LINDA M. FORREST** — “In memory of Lowell R. Douce, father of Dr. Louise Douce”
- DR. PINO FUMAI** — “In memory of Jacob Peter Giardina”
- MRS. EVELYN L. GERSON** — “In memory of Shifra Gershon”
- MS. SHELLEY L. GERSON** — “In memory of James W. Brooks”
- DR. GOLDINE C. GLESER** — “In memory of Dr. David Ihilevich”
- DR. ALBERT E. GOSS** — “In memory of George J. Wischner”
- STANLEY R. GRAHAM, Ph.D.** — “In memory of Fred Strassburger, Ph.D.”
- MS. LENORA GRIMANDO AND MR. DENNIS GLICK** — “In memory of Harry and Pearl Rubin”
- DR. MOLLY P. HAUCK** — “In memory of Nicholas Hobbs”
- DR. MARVIN HERSKO** — “In memory of Barbara A. Hersko”
- DRS. RUTH G. AND JOSEPH D. MATARAZZO** — “In memory of Fred Strassburger, Ph.D.”
- JAMES M. McMAHON, Ph.D.** — “In memory of Francis Savino”
- DR. PETER F. MERENDA** — “In memory of Leonard V. Gordon;” “In memory of Richard H. Lindeman, Ph.D.”
- MR. DENNIS MURRAY** — “In memory of J. Francis Sansone”
- DR. EDMUND J. NIGHTINGALE** — “In memory of Fred Strassburger, Ph.D.”
- DR. KATHERINE C. NORDAL** — “In memory of Dr. Catherine Acuff;” “In memory of George Taylor”
- DRS. ROBERT AND EVELYN PERLOFF** — “In memory of Suzanne B. Sobel, Ph.D., who advocated all the right causes for psychology and for humanity;” “In memory of Fred Strassburger, Ph.D., a staunch friend, esteemed psychologist, and a warm and compassionate human being”
- MS. JEAN PORTER** — “In memory of Paul B. Porter, Ph.D.”
- DR. MARTIN REISER** — “In memory of Drs. Esther and William Menaker”
- DR. AND MRS. ROBERT J. RESNICK** — “In memory of Kyle William Helfrich”
- DR. MARY E. REUDER** — “In memory of Dr. Marvin Iverson”
- LAWRENCE G. RITT, Ph.D.** — “In memory of Fred Strassburger, Ph.D.”
- DR. DANIEL AND MRS. GRACE ROTHSTEIN** — “In memory of our son, Dr. Michael Paul Rothstein”
- DR. DONALD K. AND MRS. MARION ROUTH** — “In memory of Dr. Philip Holzman;” “In memory of Saul Rosenzweig”
- DR. SYLVIA SHELLENBERGER** — “In memory of Dr. Marianne Pattan”
- DR. REUBEN J. AND MRS. MARY M. SILVER** — “In memory of Dr. Bud Orgel”
- TOMMY T. STIGALL, Ph.D.** — “In memory of Jerry H. Clark, Ph.D.,” “In memory of Ralph Mason Dreger, Ph.D.”
- MRS. CAROLE L. THORSELL** — “In memory of Bernard Alan Thorsell, my husband”
- DR. HENDRIKA VANDE KEMP** — “In memory of Virginia Sexton”
- JACK G. WIGGINS, Ph.D.** — “In memory of Patrick Romine;” “In memory of Fred Strassburger, Ph.D.”

March 1 through August 31, 2004

- LEONA S. AIKEN, Ph.D.** — “In honor of Dr. Douglas N. Jackson”
- MR. RANDELL C. AND MRS. SANDRA P. ALEXANDER** — “In honor of Sylvia Shellenberger, Ph.D. and Robert Paul”
- DR. JOAN S. ANDERSON** — “In honor of Dr. Margaret Maynard”
- MR. DICK AND MRS. MIMI BERGEL** — “In honor of the marriage of Charisse and James Banner”
- DR. LINDA F. CAMPBELL** — “In honor of Mathilda B. Canter, Ph.D.,” “In honor of Dr. Patrick DeLeon”
- MATHILDA B. CANTER, Ph.D.** — “In honor of Alice F. Chang, Ph.D., recipient of the Life Achievement Award from the Asian American Psychological Association;” “In honor of Miki Paul, Ph.D., recipient of the APA Award for Distinguished Professional Contributions to Independent or Institutional Practice in the Private Sector”
- DOROTHY W. CANTOR, Psy.D.** — “In honor of Dr. Mathilda B. Canter’s birthday”
- FLORENCE L. DENMARK, Ph.D.** — “In honor of Rachele Flora – on the birth of her nephew and her achievement of the M. S. of Education”
- KIM ERNST, Ph.D.** — “In honor of Dr. Steven F. Davis;” “In honor of Dr. Raymond Russin;” “In honor of Randall Wight”
- DR. LEONARD AND MRS. MADELINE ERON** — “In honor of Professor Toni Antonucci;” “In honor of Professor Arthur Benton”
- FAITH, ALLEN, MARJORIE, AND JEFFREY FRIEDMAN** — “In honor of Mathilda B. Canter, Ph.D., on her 80th birthday”
- MRS. EVELYN L. GERSON** — “In honor of Ruth Goldstein on her 90th birthday;” “In honor of the marriage of Sylvia Shellenberger, Ph.D. and Robert Paul on August 7, 2004”
- JOHN I. GERSON, Ph.D.** — “In honor of Louis Getoff, Ph.D.”
- NADINE J. KASLOW, Ph.D.** — “In honor of the marriage of Sylvia Shellenberger, Ph.D. and Robert Paul”
- DR. JAMES A. AND MRS. MARTHA E. LIVINGSTON** — “In honor of the wedding of Sylvia Shellenberger, Ph.D.”
- DR. IVAN N. MENSCH** — “In honor of Frances L. and Ivan N. Mensch”
- DORIS K. MILLER, Ph.D.** — “In honor of William Bevan, Ph.D.”
- DR. PHILIP J. MOORE’S RESEARCH LAB** — “In honor of Philip J. Moore, Ph.D.”
- DRS. ROBERT AND EVELYN PERLOFF** — “In honor of Judy Strassburger, for all she has done for APA and for her unfailing devotion to her late husband, Fred Strassburger, Ph.D., a towering figure in psychology’s solicitude for the human condition”
- MR. HAROLD AND MRS. LINDA ROSENSON** — “In honor of the marriage of the daughter of Dr. Barbara and Mr. Jerry Golden”

Note. Every attempt is made to include all individuals who have made honor or memorial contributions to APF. Please call the APF Office at (202) 336-5622 to report any adjustments.

To make an honor or memory contribution, simply include a note with your gift indicating the name of the person or institution in whose honor or memory the gift is being made. In addition, include the name and address of anyone who should be notified by APF of your contribution. Send contributions c/o Elizabeth H. Merck, APF, at the APA address. Please print all information clearly.

## American Psychological Foundation Legacy Club

If you have included APF in your will or estate plans, please let us know. You will become a member of the APF Legacy Club and will receive invitations to special events and recognition in APA publications (unless you request otherwise). To become a member of the APF Legacy Club, please call (202) 336-5622.

### APF Legacy Club

Anonymous	Harry Levinson, Ph.D.	Dr. Arlyn H. Miller
Anonymous	Dr. Robert A. and	Mr. John Noon
Lyle Eugene Bourne, Ph.D.	Mrs. Phyllis Levitt	Mary Ellen Olbrisch, Ph.D.
Douglas Bray, Ph.D.	J. Nina Lieberman, Ph.D.	Dr. and Mrs. James
Alex Caballo-Dieguez, Ph.D.	Dr. Lewis P. and Mrs. Edna	Campbell Quick
Alice F. Chang, Ph.D.	Duchin Lipsitt	Annette U. Rickel, Ph.D.
Mrs. Celia Crawford	Drs. Rodney Lowman and	Dr. Martin E. P. Seligman
Dr. Henry P. and	Linda Richardson	Dr. Patricia A. Smith
Mrs. Tema David	Elaine Lundahl, Ph.D.	Dr. Franklyn Springfield
Dr. Raymond D. Fowler	Neva Mahoney	Dr. George and
Morris Goodman, Ph.D.	Drs. Ruth G. and	Mrs. Joan Stricker
Stanley Graham, Ph.D.	Joseph D. Matarazzo	Drs. Raymond A. and
Lee Gurel, Ph.D.	Wilbert McKeachie, Ph.D.	Rosalee Weiss
Frances Degen Horowitz, Ph.D.	James H. McNeil, Ed.D.	William J. Woods, Ph.D.
Ann Howard, Ph.D.	Dr. Manfred and	
Douglas Kimmel, Ph.D.	Mrs. Roberta Meier	

### American Psychological Foundation

The American Psychological Foundation, established in 1953, is a nonprofit, philanthropic 501(c)(3) organization that provides grants, scholarships, and awards to individuals and groups in order to advance the science and practice of psychology for the understanding of behavior and the benefit of human welfare.

### The 2004 Trustees and Staff

Dorothy W. Cantor, PsyD (*President*); Norman Abeles, PhD (*Secretary*); Charles L. McKay (*Treasurer*); Norman Anderson, PhD; Camilla Benbow, EdD; Patrick H. DeLeon, PhD; Ronald E. Fox, PhD; William C. Howell, PhD; Steven E. James, PhD; Norine G. Johnson, PhD; Joseph D. Matarazzo, PhD; Martin E. Seligman, PhD; Elisabeth R. Straus, Richard M. Suinn, PhD; Philip Zimbardo, PhD.

- Elisabeth R. Straus, *Executive Vice President/Executive Director*
- L. Keith Cooke, *Assistant Director, Programs*
- Elizabeth H. Merck, *Assistant Director, Development*
- Shana M. Hawkins, *Program Coordinator*
- Sheri Lynne Hoffman, *Senior Analyst/Senior Accountant*

750 First Street, NE  
Washington, DC 20002

Web: [www.apa.org/apf](http://www.apa.org/apf) • Email: [foundation@apa.org](mailto:foundation@apa.org)

(Printed in the United States)

4

NONPROFIT  
U.S. POSTAGE  
PAID  
STEVENSVILLE, MD  
PERMIT # 120

American Psychological Foundation  
750 First Street, NE  
Washington, DC 20002-4242



Psychology  
**GIVING**  
www.apa.org/apf

VOLUME 2/ISSUE 3 AUTUMN 2004