

# PsycINFO NEWS

VOLUME 22 NUMBER 2 SUMMER 2002



AMERICAN  
PSYCHOLOGICAL  
ASSOCIATION

IN THIS ISSUE	
Reload 2002	1
PsycARTICLES News	1
Search Hints	3
Cited References	4
Coming Soon/Machine Aided Indexing/Retirement	5
PIN Electronic/Exhibits	6

## Reload 2002

In April we sent an upgraded PsycINFO database to our vendors. To date the database has been regenerated on the following vendor systems: CSA, DataStar, EBSCOhost, OCLC FirstSearch., and SilverPlatter. This issue of *PsycINFO News* contains details about the enhancements that have resulted from the reload.

### New PsycINFO Content

Extensive historic material was digitized and added to PsycINFO; the database now goes back to 1872.

**Psychological Index.** 40,842 English-language citations from *Psychological Index*, which was published annually from 1894-1935, were added. *Psychological Index* did not publish abstracts. Duplicates of citations that were already in PsycINFO because they had appeared in *Psychological Abstracts* were removed and the journal titles from *Psychological Index* were, as much as possible, expanded to the full journal title.

**Harvard Book Lists.** The instructional staffs of the Harvard University Department of Psychology and Department of Social Relations compiled these lists. They represented their recommendations to psychology students at all levels, as well as to non-psychologists who wanted to learn what psychologists were publishing on various topics. The duplicates among the lists published from 1938-1971 and those that were already in PsycINFO were removed, resulting in the addition of 1,589 new book records to PsycINFO. The

abstract field contains a short description of the book and the Harvard Book List from which it came. A 1932 Harvard Book List was discovered too late to be processed for the reload. We will add unique titles from it in a future reload.

**Books and Chapters from *Psychological Abstracts*.** When APA created the historic PsycINFO file in 1998, there were records for chapters from edited books for which there were no parent book records. Because the PsycINFO edited book format requires that all chapter records have a corresponding book record, these were not added with the other historic material. This year we created 315 new book records for the "orphan" chapters and united the rest of the outstanding chapters with their existing book records in PsycINFO, resulting in the addition

of 8,852 chapters to PsycINFO. This is the last step in the process of totally digitizing *Psychological Abstracts* and adding it to PsycINFO. All records that were published in *Psychological Abstracts* from 1927 to present can now be found in PsycINFO.

### Changes to the PsycINFO Record

**Correspondence Address.** Starting with records released in February 2002, PsycINFO displays the correspondence address that appears in the document. This, along with the author e-mail address, which was added in 2001, will aid in direct communication with authors.

**Multiple Author Affiliations.** Starting with records processed in February 2002, affiliations listed for

*continued on page 2*

## PsycARTICLES News

### Site License Price Break

APA has announced a 20% price reduction for a new or renewal PsycARTICLES site license for institutions that currently subscribe to PsycINFO. This offer will be good until December 1, 2002. Further, institutions that arrange for a three-year license can guarantee a price increase of no more than 4% for the second and third year. Contact your vendor or APA Licensing at [quotes@apa.org](mailto:quotes@apa.org) or 800-374-2722 for details.

### PsycARTICLES Direct Enhanced

Individuals can obtain full-text from PsycARTICLES on an as-needed basis by using PsycARTICLES Direct at [www.psycinfo.com/psycarticles](http://www.psycinfo.com/psycarticles). Each article costs \$9.95 payable by credit card. Coming soon to PsycARTICLES Direct is the ability to browse the tables of contents of the journals and to view the articles in PDF, as well as in HTML format. You can search PsycARTICLES Direct and read the abstracts free of charge, paying only when you would like to read a full article.



## Reload 2002

continued from page 1

all authors have been included in the record. Previously the author affiliation field contained the affiliation of the first author only.

**Journal URL.** In the 2000 reload we added the journal publisher names and the URLs for their Web home pages to PsycINFO records. With this reload, we have also added a URL for the specific journal home page. Where possible, the page displayed will lead to an opportunity to order articles from that journal.

**Access URL.** The Availability URL field, which is assigned to articles appearing only in electronic format has been renamed Access URL. Previously the URL for electronic versions of paper journals also appeared in this field. The field is now used solely for electronic-only journals.

**ISSN.** Print or electronic ISSN or both may appear and the record now indicates which is which. Example: from WebSPIRS for *Media Psychology*, ISSN (PRINT VERSION): 1521-3269; (ELECTRONIC VERSION): 1532-785X.

**Key Concepts.** The Key Phrase field (called Identifiers on some systems) has been renamed Key Concepts to reflect the 2001 format change in this field. This field now contains words and phrases that express the prominent concepts in the document and is a free-text complement to the controlled vocabulary found in the Descriptors.

**Peer Reviewed.** The Special Feature field value *Peer Reviewed*, which has up to now appeared only in current PsycINFO records, has been mapped back to all records to which it applies. This makes it possible to retrieve only articles that were published in peer-reviewed journals.

## Cited References

The big enhancement to PsycINFO is the addition of cited references for

articles, books, and chapters. The references were collected comprehensively starting in 2001, but have been captured retrospectively back to 1988, where available. Cited references result in two new fields: the number of references (number published and number included in the PsycINFO record) and the list of references. Currently there are 6 million cited references in PsycINFO.

**Distribution of Records Containing Cited References by Year.** Here is a list of the number of records that have cited references by the year the record was processed.

YEAR	RECORDS
1988	718
1989	959
1990	1,086
1991	1,640
1992	1,596
1993	1,667
1994	1,577
1995	1,599
1996	801
1997	1,946
1998	1,517
1999	12,152
2000	15,887
2001	50,994
2002	39,208

**Format of Cited References.** The display format for the references is APA style, with the full journal title, where possible. PsycINFO will continue to work to expand the remaining abbreviated journal titles. 96% of the author names contain initials, not first names.

You may wonder why the number of references displayed in the PsycINFO record does not equal the number originally published. The reference list includes all standard Roman character references to any source material—journal, book, video, case

law, and so forth. However, sometimes references will be excluded. Reasons include the following:

- ◆ They do not refer to a publication (sometimes notes are published in the reference list).
- ◆ They do not contain sufficient information to identify the publication (sometimes citations are fragments).
- ◆ They cause the record to exceed the MARC character length limit. In these cases, we add as many of the references as the record limit will allow. For some books with very long reference lists, we are holding all the references. In both of these cases we will output all the references in a future reload, when we move to an XML format.



PsycINFO staff are already working on enhancements for the next reload, planned for sometime in 2003. We welcome recommendations for changes and would love to hear from you.

## PsycINFO NEWS

PsycINFO News is published quarterly by

### PsycINFO

American Psychological Association  
750 First Street, NE  
Washington, DC 20002-4242

### Telephone:

(800) 374-2722 • (202) 336-5650

Fax: (202) 336-5633

TDD: (202) 336-6123

E-mail: [psycinfo@apa.org](mailto:psycinfo@apa.org)

Web: [www.apa.org/psycinfo](http://www.apa.org/psycinfo)

Printed in the United States of America.

All organization, product, or service names mentioned are trademarks or service marks of their respective owners.

Graphical software interfaces appearing in illustrations herein are copyright © by their manufacturers.

# Searching Cited References in PsycINFO

Searching in the cited references field is remarkably different from searching other PsycINFO fields. The content, while consistently fielded and displayed, is not as controlled as that of other fields in the PsycINFO record. Author names are represented in 96% of the cases by surnames and initials and variant spellings abound because the names have been spelled differently in different publications.

Assuming that most searchers will be interested in finding articles and books citing known references, we searched for the following citations on CSA, DataStar, EBSCOhost, OCLC FirstSearch, and SilverPlatter – the vendors that have loaded the cited references so far. See the accompanying table for tips on searching these references on each of the systems.

Bettelheim, B. (1977). *The uses of enchantment: The meaning and importance of fairy tales*. New York: Vintage Books.

Costa, P. T. Jr., & McCrae, R. R. (1985). *The NEO Personality Inventory manual*. Odessa, FL: Psychological Assessment Resources.

## General tips:

- ◆ It is important to know whether the cited references are searched as a default when no field is specified. To the best of our knowledge, DataStar is the only system of the five that searches all fields, including the references, when no field is specified.
- ◆ If your search system provides the ability to search in the same sentence or to use other proximity operators, these are preferable to using AND in the cited reference field to prevent retrieving records in which the author appears in one reference and the other search terms in another.
- ◆ Browse indexes, if available. Doing so may alert you to the need for truncation in searching for some references.
- ◆ Remember that journal titles may occur in abbreviated, as well as spelled-out form.
- ◆ In checking your retrieval, use CTRL+f or other Web browser utilities to find occurrences of search terms in the References field, if the search system doesn't highlight them. The length and density of the field can make it difficult to spot titles and second authors on some systems.

## Partial Record Retrieved

**Title:** The antecedents and correlates of agreeableness in adulthood

**Author:** Laursen, Brett; Pulkkinen, Lea; Adams, Ryan

**Author Affiliation:** Florida Atlantic U, Dept of Psychology, Ft Lauderdale, FL, US [Laursen, Adams]; U Jyvaeskylae, Dept of Psychology, Jyvaeskylae, Finland [Pulkkinen]

**Contact Individual:** Laursen, Brett, Florida Atlantic U, Dept of Psychology, 2912 College Avenue, Ft Lauderdale, FL, US, 33301, [mailto:laursen@fau.edu]

**Source:** *Developmental Psychology*. Vol 38(4), Jul 2002, pp. 591-603

**Information Provider:** [URL: <http://www.apa.org/journals/dev.html>]

**ISSN:** 0012-1649 (Print)

**DOI:** 10.1037//0012-1649.38.4.591

**Publisher:** American Psychological Assn, US, [URL:<http://www.apa.org>]

**Abstract:** Data from a 25-year prospective study of 194 individuals indicated that teacher and peer reports of aggression, compliance, and self-control at age 8 distinguished high-agreeable from low-agreeable adults at age 33. Profile analyses revealed two behavioral types in childhood and two personality types in adulthood, with considerable continuity in the composition of these high- and low-agreeable types over time. High-agreeable childhood types had fewer disobedience and concentration problems than low-agreeable childhood types, and among boys, high-agreeable childhood types had better school grades and fewer behavior problems than their low-agreeable counterparts. High-agreeable adulthood types reported less alcoholism and depression, fewer arrests, and more career stability than did low-agreeable adulthood types. (PsycINFO Database Record (c) 2002 APA, all rights reserved) [journal abstract]

**Features:** References; Peer Reviewed

**Number of References:** 52 reference(s) present, 52 reference(s) displayed

**References:** 1. af Klinteberg, B., Schalling, D., & Magnusson, D. (1990). Childhood behavior and adult personality in male and female subjects. *European Journal of Personality*, 4, 57-71.

2. Ahadi, S. A., & Rothbart, M. K. (1994). Temperament, development, and the Big Five. In C. F. Halverson Jr., G. A. Kohnstamm, & R. P. Martin (Eds.), *The developing structure of temperament and personality from infancy to adulthood* (189-207). Hillsdale, NJ: Erlbaum.

3. Baron, R. M., & Kenny, D. A. (1986). The moderator-mediator variable distinction in social psychological research: Conceptual, strategic, and statistical considerations. *Journal of Personality and Social Psychology*, 51, 1173-1182.

4. Bates, J. E. (1986). Measurement of temperament. In R. Plomin & J. Dunn (Eds.), *The study of temperament: Changes, continuities, and challenges* (1-11). Hillsdale, NJ: Erlbaum.

5. Bergeman, C. S., Chipuer, H. M., Plomin, R., Pedersen, N. L., McClearn, G. E., & Nessleroad, J. R. et al. (1993). Genetic and environmental effects on openness to experience, agreeableness, and conscientiousness: An adoption/twin study. *Journal of Personality*, 61, 159-179.

6. Block, J. (1971). *Lives through time*. Berkeley, CA: Bancroft.

7. Caspi, A. (1998). Personality development across the life course. In W. Damon & N. Eisenberg (Eds.), *Handbook of child psychology* (5th ed.): Vol. 3. Social, emotional, and personality psychology (311-388). New York: Wiley.

8. Caspi, A. (2000). The child is father of the man: Personality continuities from childhood to adulthood. *Journal of Personality and Social Psychology*, 78, 158-172.

9. Caspi, A., Elder, G. H. Jr., & Bem, D. J. (1987). Moving against the world: Life course patterns of explosive children. *Developmental Psychology*, 23, 308-313.

10. Costa, P. T. Jr., & McCrae, R. R. (1985). *The NEO Personality Inventory manual*. Odessa, FL: Psychological Assessment Resources.

11. DeNeve, K. M., & Cooper, C. (1998). The happy personality: A meta-analysis of 137 personality traits and subjective well-being. *Psychological Bulletin*, 124, 197-229.

*Citations Continue...*

# Searching Cited References Part I

CSA IDS, DataStar, EBSCOhost, OCLC FirstSearch, SilverPlatter.

	Field Name	Field Label	Search Example	Search Hints
CSA IDS	References	re=	re=(costa within 12 1985 within 12 neo personality inventory) re=(uses of enchantment)	Look up the citation in PsycINFO and click on "cited by..." link at the top of the record. If there is no PsycINFO record, search the References field directly using within x or near (within 10 words). No order specified with either within or near.
DataStar	Cited References	.cr.	uses near enchantment.cr. costa same 1985 same neo personality inventory.cr.	In Advanced Search use <i>with</i> to search for terms within a section of a citation (between periods). Consider also <i>near</i> or <i>next</i> proximity operators.
EBSCOhost	References Text	rt	rt (uses of enchantment) rt costa n10 1985 n3 neo personality inventory	
OCLC FirstSearch	Cited Reference Cited Reference Phrase	cr	browse <i>neo personality inventory</i> in cited reference phrase field (cr=) and select appropriate occurrences cr=uses of enchantment* (or browse title in cr= field) cr:uses w2 enchantment	
SilverPlatter	Reference Year Index Reference Title Index (article, book, and chapter titles) Reference Source Index (journals and book titles for chapters) Reference Author Index	RYI RTI (word- indexed) RSI (phrase- indexed) RAI (phrase- indexed)	1995 in ryi uses near2 enchantment in rti neo personality inventory in rti american-psychologist in rsi costa-p* in rai	REF is a display-only field. It is not possible to search across the entire reference. Select author names from the RAI index.  Use nearx to search titles (RTI), where x is the number of words between search terms.

## COMING SOON!

Last Spring, PsycINFO identified approximately 600 journals from which we select more than 95% of the articles as candidates for indexing cover to cover. Indexers have recently been processing all document types—articles, letters, obituaries, reviews, and columns—that appeared in these journals. We plan to finalize the list and identify the journals on the Web site later this Fall.

In the meantime, you will begin to see non-article journal material in PsycINFO. So that searchers can limit their retrieval to articles, there will be new values in the Form/Content field, including Journal Article, Journal Article Peer Reviewed Journal, Journal Book Review, Journal Editorial, Journal Obituary, and so on. Look for the new values soon.

As a sidelight, we'd like to thank the many librarians and psychologists who responded to our request for feedback on the usefulness of the current Form/Content list. We used your advice as we revised the current list and added new values. It is gratifying to know that the information provided in Form/Content and Special Feature is used by so many searchers. ✦

## Machine-Aided Indexing at PsycINFO

The PsycINFO indexing process includes analyzing the contents of source documents, translating concepts into controlled vocabulary or index terms from the *Thesaurus of Psychological Index Terms*, and weighting those terms based on the focus of the document. This spring, PsycINFO staff began using a machine-aided indexing (MAI) tool produced by a Montreal-based company, Nstein Technologies.

The MAI tool is not intended to replace the intellectual attention needed to produce a good index. Instead, it is used to enhance the indexing process in several ways: It eliminates many of the clerical components of finding terms, typing terms, and even designating and weighting terms as major or minor. With less time spent on the mechanics of indexing, staff have more time to spend on the intellectual functions of indexing and quality assurance. To ensure the highest quality, staff check and verify all MAI suggested terms for accuracy and comprehensiveness. They have the option to delete incorrect terms suggested by the MAI system or add additional terms as appropriate.

Using an automated program brings more consistency to the indexing process as well as increased productivity. By decreasing the amount of time spent creating indexing data, it is anticipated that PsycINFO's productivity will increase by as much as 20-30%. Also, with a software tool like Nstein's MAI, we have the ability to capture new concepts and build a file of potential new terms for development of the controlled vocabulary. Automated technologies that provide support to indexing are having a dramatic impact on the efficiency, accuracy, and productivity of bibliographic databases like PsycINFO. ✦

## Carolyn Gosling to Retire

Carolyn Gosling, PsycINFO's esteemed Customer Relations Manager, will retire in September after 21 years at APA. She began as an indexer for PsycINFO in May 1981 and then became a Database Education Specialist doing training & exhibits in 1983. Carolyn said, "When I came to APA, I thought I'd be an indexer for a couple of years and then get a job as a real librarian, but it didn't work out that way." (She had worked as a reference librarian in the public library in Newark, New Jersey before coming to Washington and APA.) Instead she became the Manager of the User Services unit in December 1984. For 16 years she headed a group that delivered training, staffed exhibits, prepared documentation, did advertising, and generally worked with customers. Then in December 2000 she became the Customer Relations Manager, and she has continued to advocate for customers and assure that APA responds to their needs.

Customers know Carolyn for her expert help in training and her warm responses to their questions, whether they are meeting at an exhibit or writing or phoning APA. There is no one who knows the PsycINFO database better than Carolyn, and she has always been generous in sharing her knowledge. In the past two years, she has been instrumental in arranging meetings and roundtables with customers so that we could hear concerns and respond to them.

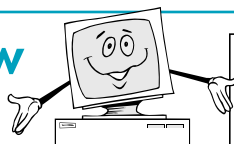
Internally, she has been the strongest advocate for customer needs and improvements to APA's databases, first PsycINFO and then PsycARTICLES. She had the vision to know what we needed to change and the perseverance to make sure the changes occurred.

When asked what has given her the most satisfaction in working at APA, Carolyn said, "The joy of my work at APA has been listening to users (both psychologists and librarians) and bringing back their concerns and making suggestions about improving PsycINFO to make it more useful. It has never been boring—there have been so many changes in the information landscape over the years that it's been a constant learning experience keeping up! And now with PsycARTICLES, I've had to learn about primary publishing.

Two other groups of people have been important to me—PsycINFO's dedicated staff who care so deeply about the database and the dear friends that I've made over the years from the information industry—people from other databases and vendors. Some of the latter friendships go back a very long way."

All of us will miss Carolyn very much. We hope that readers will join us in wishing her well in her retirement. ✦

# PsycINFO News Now Electronic Only



There will be a change in the distribution of *PsycINFO News (PIN)* starting with the Fall 2002 issue. We will no longer mail paper copies, but continue to put the issues on the Web site in PDF (Portable Data Format). New issues of *PIN* can be found at <http://www.apa.org/psycinfo/training/pin/>, along with a link to Adobe Acrobat to download the free software needed to view *PsycINFO News*.

You can join the list to be notified when a new issue is posted by sending an e-mail note to [listserv@lists.apa.org](mailto:listserv@lists.apa.org). Leave the subject line of the note blank. On the first line of the note, enter the phrase: "subscribe psycinfo," followed by your first and last name.

When you subscribe, you will receive important information about the list server that you should keep for future reference. From time to time you will receive e-mail announcements from PsycINFO and will be notified of new issues of *PsycINFO News*.

Although *PsycINFO News* will no longer be mailed, we'd appreciate your maintaining your current address on our snail mail list so we can send you notices about new PsycINFO publications. Therefore, *PsycINFO News* will continue to carry the "Update Your Label" box.

## Upcoming Exhibits

If you are attending one of these exhibits, please stop to chat and see what's new at APA.

- |              |  |
|--------------|--|
| October 30   | Vendor Showcase, Charleston Conference<br>Charleston, SC |
| December 3-5 | Online Information 2002, Booth #1<br>London, UK          |

### UPDATE YOUR LABEL

Is your address label correct? Should others in your organization receive *PsycINFO News*? Please use this form to let us know.

- Please change my address label. I have attached the old label to speed processing.
- Please add me to the mailing list.

Name \_\_\_\_\_

Title \_\_\_\_\_

Department \_\_\_\_\_

Organization \_\_\_\_\_

Address \_\_\_\_\_

City \_\_\_\_\_

State/Province \_\_\_\_\_ Zip/Postal Code \_\_\_\_\_

Country \_\_\_\_\_

E-mail address \_\_\_\_\_

Nonprofit Organization  
U.S. Postage  
**PAID**  
American Psychological  
Association

PsycINFO  
American Psychological Association  
750 First Street, NE  
Washington, DC 20002-4242

PsycINFO  
NEWS