



TORONTO

APA 117TH ANNUAL CONVENTION • AUGUST 6-9

2009

THE STATE OF PSYCHOLOGY AT COMMUNITY COLLEGES

Salvador Macias, III, Ph.D.
University of South Carolina Sumter, SC

Vivian I. McCann, M.A.
Portland Community College, OR

Julie Penley, Ph.D.,
El Paso Community College, TX

August 8, 2009





TORONTO

APA 117TH ANNUAL CONVENTION • AUGUST 6-9

2009

Acknowledgements:

PT@CC Committee Members:

Wynn Call, Ph.D., Mesa Community College, AZ (2008-10)

Susan M. Franz, M.A., Highline Community College, WA (2009-11)

Vince Granito, Ph.D. (Chair, 2008) Loraine County Community College, OH (2006-08)

Salvador Macias, III, Ph.D. (Chair, 2009) University of South Carolina Sumter, SC (2007-09)

Vivian I. McCann, M.A. Portland Community College, OR (2006-08)

Julie Penley, Ph.D., El Paso Community College, TX (2008-10)

Nancy Schaab, Ph.D. Delta College, MI (2007-09)

Larry Venuck, Ph.d., Naugatuck Valley Community College, CT (2009-11)

APA Staff:

Martha Boenau

Robin Hailstorkes, Ph.D.

Jewell Beamon

PT@CC Survey Sponsored in part by a Grant from APA





TORONTO

APA 117TH ANNUAL CONVENTION • AUGUST 6-9

2009

Abstract

In 2007-2008 APA's Committee for PT@CC conducted a survey of community college faculty in the US. We utilized electronic listserves, addresses provided by the American Association of Community Colleges, APA's data base, etc., to secure as wide a potential data pool as possible. Our survey sought information about faculty status (full time, adjunct status, other employment), educational level, demographics, work load (courses per term, campus and community service), courses taught, professional activity, teaching "style" (distance education, service-learning, learning communities, technology used), etc. We received over 1,800 responses representing over 600 community colleges. This presentation is a summary of these findings.





TORONTO

APA 117TH ANNUAL CONVENTION • AUGUST 6-9

2009

PT@CC Survey of Community College Faculty

1,800 Responses to Survey

600 Colleges Represented

2500 Community Colleges in US

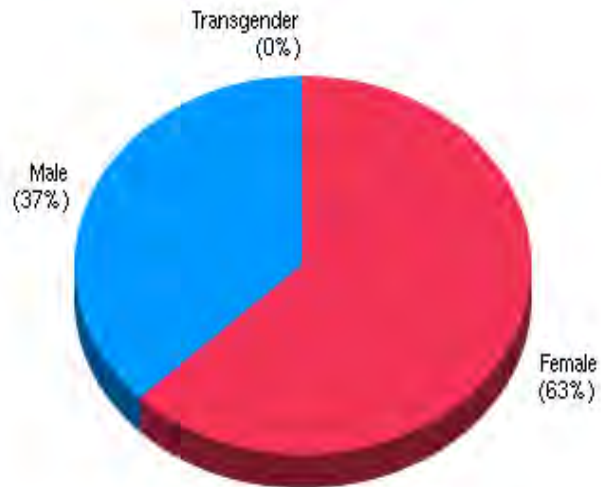


TORONTO

APA 117TH ANNUAL CONVENTION • AUGUST 6-9

2009

Gender Distribution

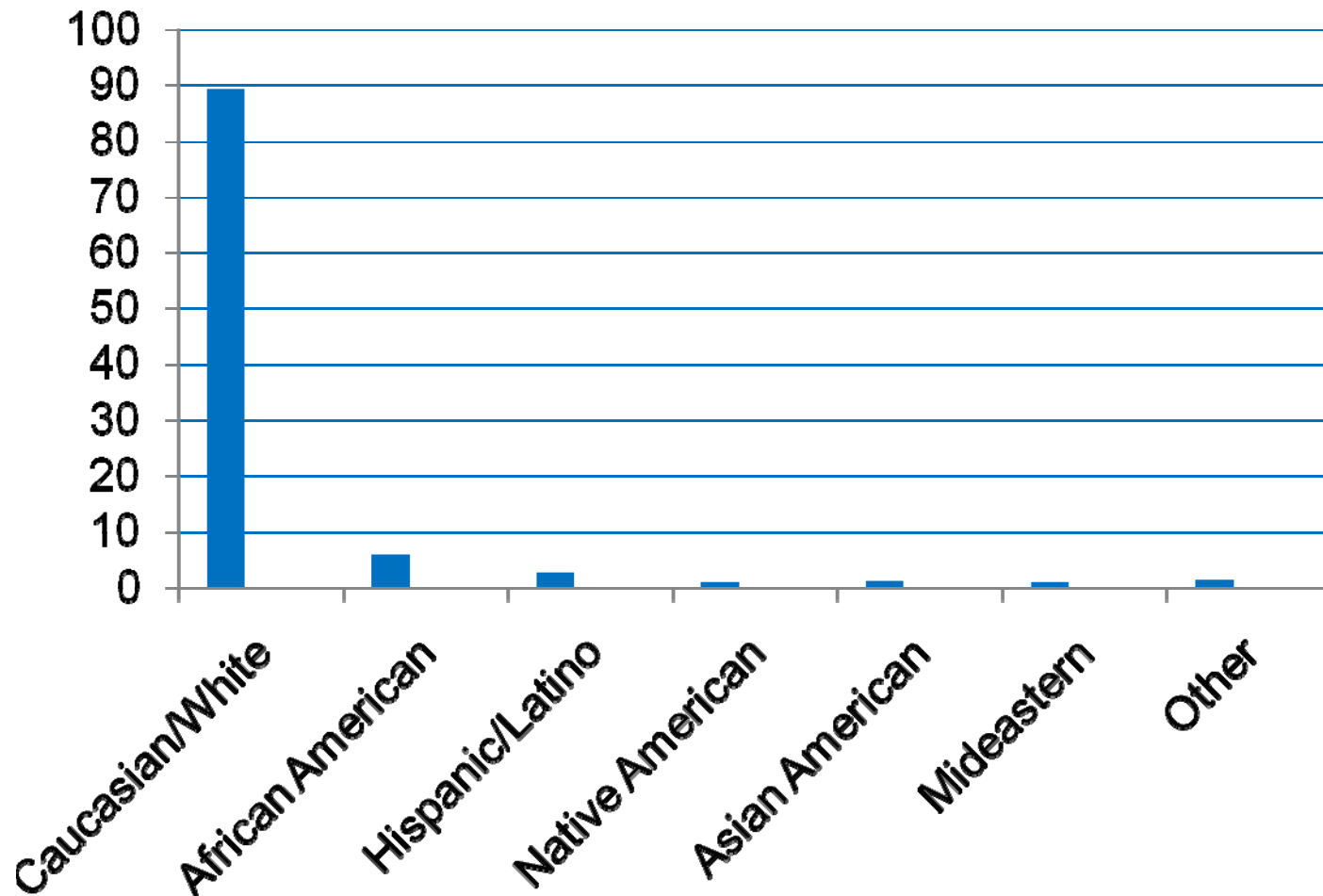


TORONTO

APA 117TH ANNUAL CONVENTION • AUGUST 6-9

2009

Ethnicity/Racial Distribution

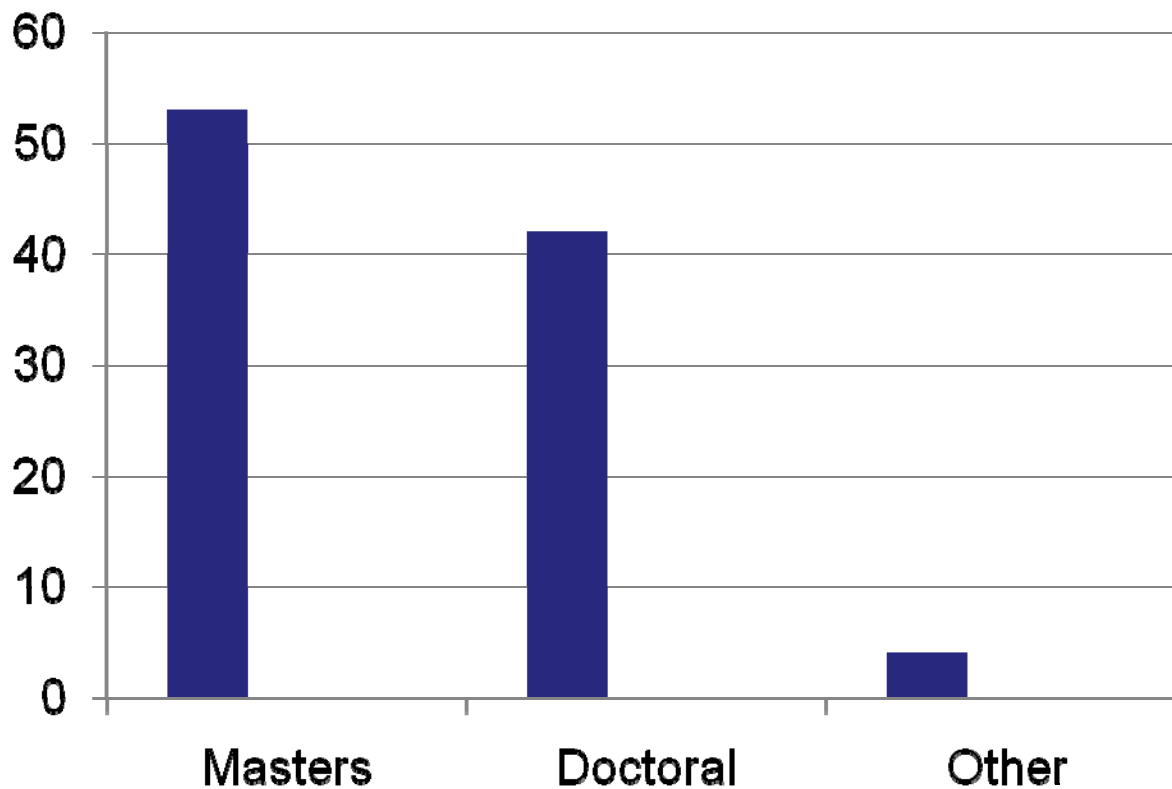


TORONTO

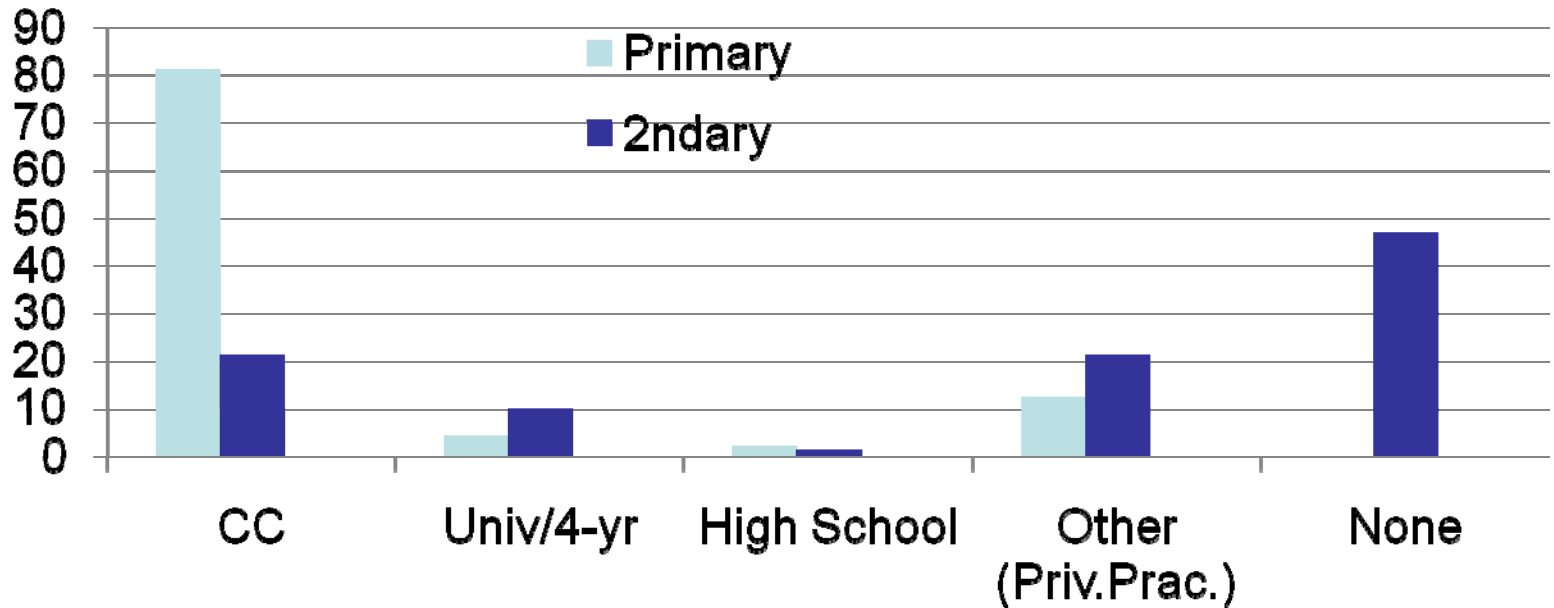
APA 117TH ANNUAL CONVENTION • AUGUST 6-9

2009

Education Level



Primary and Secondary Employment

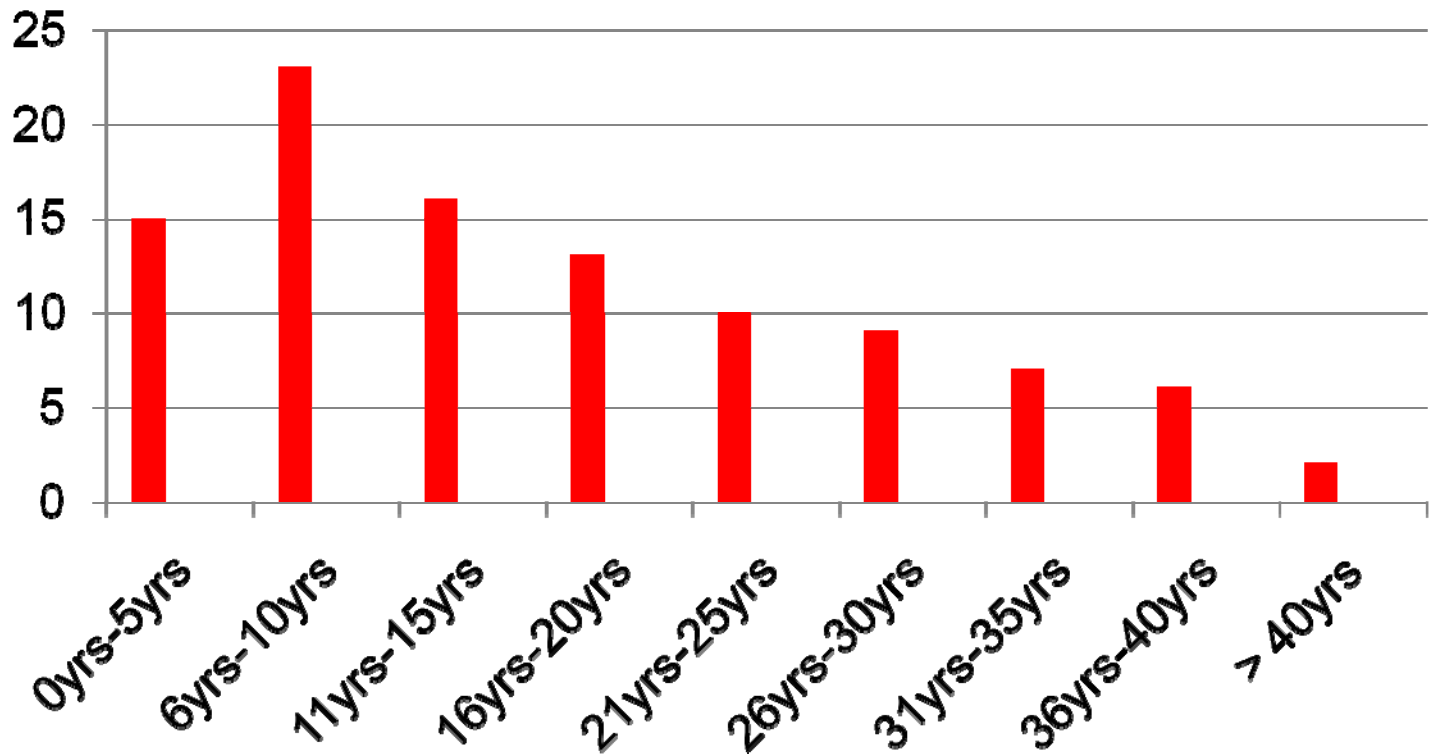


TORONTO

APA 117TH ANNUAL CONVENTION • AUGUST 6-9

2009

Teaching Experience (Full time, years)





TORONTO

APA 117TH ANNUAL CONVENTION • AUGUST 6-9

2009

Teaching “Facts”

- 56% Teach 13 or more hours/week
- 67% Classes with 20-40 students
- 50% Teach distance courses
- 36% Service learning
- 25% Learning Communities





TORONTO

APA 117TH ANNUAL CONVENTION • AUGUST 6-9

2009

Course Variability

- 91% Introductory
- 66% Developmental
- 36% Abnormal
- 20% Social
- 15% Personality
- 15% Human Sexuality
- 14% Human Relations
- 13% Educational
- 11% Research Methods

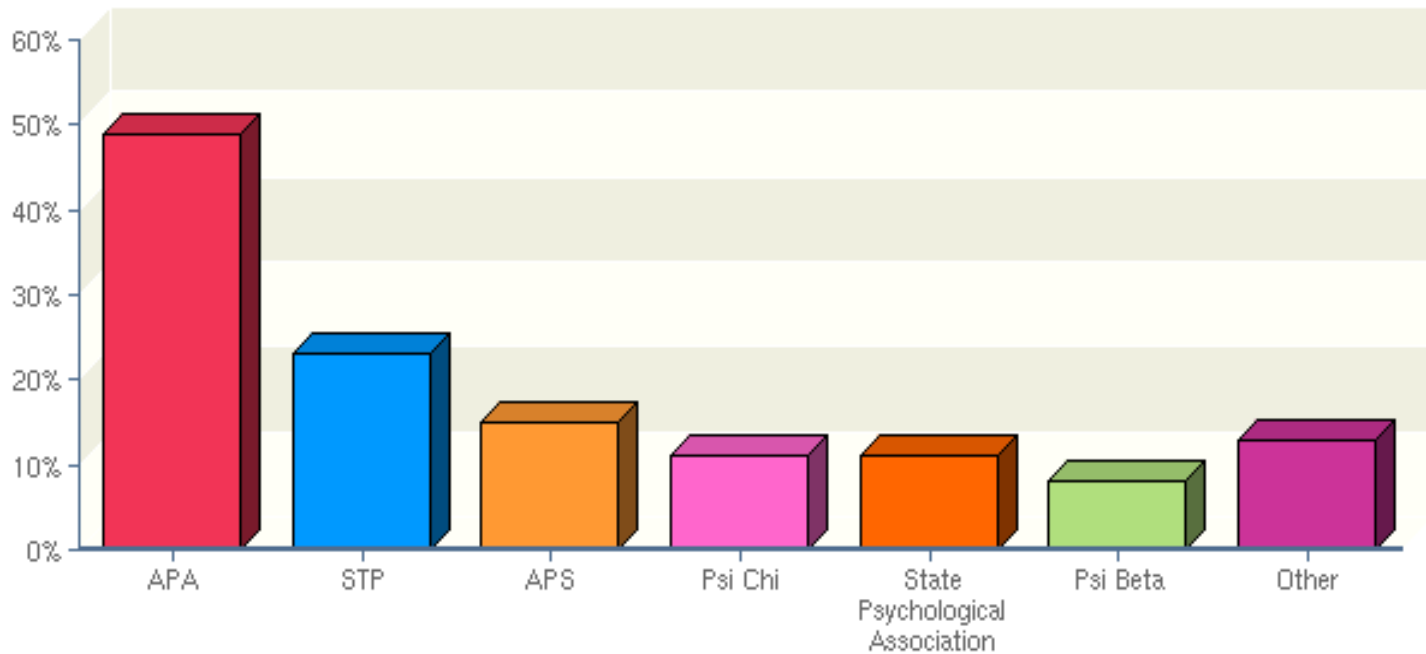


TORONTO

APA 117TH ANNUAL CONVENTION • AUGUST 6-9

2009

Professional Memberships





TORONTO

APA 117TH ANNUAL CONVENTION • AUGUST 6-9

2009

Professional Activity

- 90% Attend Professional Conferences
- 43% Present at Conferences
- 27% Research
- 42% Professional Writing





TORONTO

APA 117TH ANNUAL CONVENTION • AUGUST 6-9

2009

Community/Volunteer Involvement

- 36% Community Presentations
- 33% Public Schools
- 31% Faith Based Organizations
- 27% Special Populations
- 22% Children/Youth Groups
- 21% Boards of Directors
- 9% Elderly/Hospice



Community College Faculty Are:

- Mostly White,
- Mostly Female,
- Relatively Young,
- Teach a number of different psychology classes
 - A fair number of them per term
 - In a wide variety of ways
 - With a variety of technologies
 - To relatively small number of students
- Are very active professionally
- Are very active in their communities



TORONTO

APA 117TH ANNUAL CONVENTION • AUGUST 6-9

2009

Thank You

Salvador Macias, III, Ph.D.
University of South Carolina Sumter, SC

smacias@uscsuimter.edu

