

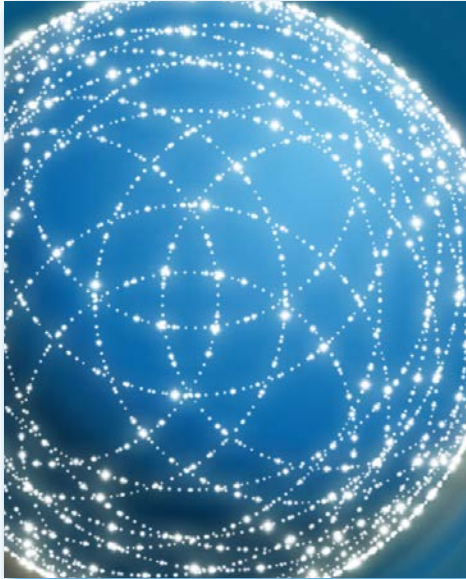


AMERICAN  
PSYCHOLOGICAL  
ASSOCIATION

# PsycINFO NEWS

VOLUME 33 • ISSUE 4 • 2014

## New Student Webinars for Fall



We know how challenged you are in teaching students how to use APA databases. APA is pleased to announce a new series of trainings geared for PsycINFO® searchers of all levels of proficiency, with a focus on less experienced searchers. It features three 30-min sessions: Basic Search, Advanced Search, and Results Management. The sessions may be taken separately, but we encourage interested students to take all three.

Could you help us spread the word to students, faculty, and TAs who might be interested in attending these? And if any librarian or faculty member who teaches research methods would like to extend extra credit to students for attending, please let us know. If we know in advance to track your students participation, we can make sure we have a record of who attends and provide a record back to you.

To register for these free sessions, participants may go to <http://www.apa.org/pubs/databases/training/webinars-students.aspx>.

### Basic Search

Do you find research daunting? Is searching the behavioral science literature a new adventure for you? Do you normally search Google or Google Scholar? Do you guess what keywords you should use?

Then this session is for you. Learn time-saving tips to get the best results quickly and easily by using search tools demonstrated by the trainers at APA's PsycINFO team. In this session you will learn how to use controlled language, fields and limits, proximity and truncation searching, and cited reference searching. This 30-minute session will show you how to find what you're looking for efficiently on a variety of platforms.

To register for these free sessions, participants may go to <http://bit.ly/psycinfoweinarsbasic>

### Advanced Search

Once you've mastered the basics of searching, then it's time to get creative with how you use the research databases! Wondering where you might find grant money? Trying to find tests and finding it a chore? Thinking it might be useful to learn how to use

*continued on page 2*

### In this issue

- 1 New Student Webinars for Fall
- 2 Training Videos That We Think You Can Use!
- 3 Training Calendar: Fall 2014
- 4 Frequently Asked Questions  
Top Tweets
- 5 In Search of: Feminism



American Psychological Association  
750 First Street, NE  
Washington, DC 20002-4242

(800)-374-2722 | (202) 336-5650 | [psycinfo@apa.org](mailto:psycinfo@apa.org) | [www.apa.org/psycinfo](http://www.apa.org/psycinfo)

**New Student Webinars for Fall**—*continued from page 1*

classification codes and find prepublication articles? Then this session is for you. This 30-minute session will explore some of the added value features in PsycINFO on a variety of platforms. Bring your own challenging search scenarios!

To register for these free sessions, participants may go to <http://bit.ly/psycinfowebinarsadvanced>

**Results Management**

Have you ever wished that you could automate your research? Imagined receiving weekly updates with new results based on your earlier searches? Have you ever wanted to add notes to your saved records to help yourself with later documentation and research?

Do you wish you could easily export an APA Style reference list?

Then, this session is for you. We can teach you how to do all of that and more. In this 30-minute session, you'll learn how manage your search results, including saving individual records, saving searches, creating customized email alerts, sharing results with colleagues, adding tags and notes, creating customizable folders, and exporting your results!

To register for these free sessions, participants may go to <http://bit.ly/psycinfowebinarsresults>

For more information or to request a customize session tailored for your lab, contact us at [psycinfo@apa.org](mailto:psycinfo@apa.org) ✦

**Training Videos That We Think You Can Use!**

PsycINFO staff make it a priority to review questions that come in from our various user groups and create video tutorials to help answer those questions as clearly and succinctly as possible. We hope you find them useful, and we encourage you to share or embed them on your own sites, use them to help answer virtual reference questions, and share them with faculty and TA's. Here are a few that we thought might be useful as we begin a new school year.

All of the videos below are available on a [Training Videos for Students playlist](#).

One of the simplest ways to help a new researcher is to show him or her how to transform a research question into a productive search of the database. We have sample searches on each of our four major platforms.

[Sample PsycINFO Search on APA PsycNET®](#)

[Sample PsycINFO Search on EBSCOhost](#)

[Sample PsycINFO Search on OvidSP](#)

[Sample PsycINFO Search on ProQuest](#)

A frequent assignment for students learning to use academic databases is finding research that is from an empirical study and specifically from peer-reviewed journals. Therefore, we created video tutorials that show how to use the Methodology and Publication

Type limiters on each of our four major platforms.

[Find Three Peer-Reviewed Empirical Articles in PsycINFO via APA PsycNET](#)

[Find Three Peer-Reviewed Empirical Articles in PsycINFO via EBSCOhost](#)

[Find Three Peer-Reviewed Empirical Articles in PsycINFO via OvidSP](#)

[Find Three Peer-Reviewed Empirical Articles in PsycINFO via ProQuest](#)

If you have students or faculty who are ready to submit a manuscript to a journal, we have video tutorials that will take them through the process of choosing an appropriate journal, using APA's journals as an example; preparing the manuscript; and submitting. We created these for each of our four major platforms.

[Submitting a Manuscript to an APA Journal, APA PsycNET version](#)

[Submitting a Manuscript to an APA Journal, EBSCO version](#)

[Submitting a Manuscript to an APA Journal, Ovid version](#)

[Submitting a Manuscript to an APA Journal, ProQuest version](#)

Are there other video tutorials that you'd like us to provide? Please let us know at [psycinfo@apa.org](mailto:psycinfo@apa.org) ✦



American Psychological Association  
750 First Street, NE  
Washington, DC 20002-4242

(800)-374-2722 | (202) 336-5650 | [psycinfo@apa.org](mailto:psycinfo@apa.org) | [www.apa.org/psycinfo](http://www.apa.org/psycinfo)



# Training Calendar: Fall 2014

This fall, our training specialists have expanded our webinar training program. Listed below is a comprehensive calendar of our webinars from October to December. This includes our sessions for librarians, library administrators (APA PsycNET® only), and students and faculty. For more details on these sessions, visit <http://bit.ly/APAwebinars>.

See a session you'd like to attend but can't make the date & time? Drop us a line at [psycinfowebinars@apa.org](mailto:psycinfowebinars@apa.org). We will be glad to set up another session at a more convenient time, or develop a custom session to cover exactly what you need to know.

## Key:

L – Librarian webinars  
LA – Library administrator webinars  
SF – Student & Faculty webinars

*Note: All times are Eastern.*

### Monday, October 6, 2014

[PsycINFO: Basic Search](#), 10:00 - 10:30 a.m. (SF)  
[PsycINFO: Advanced Search](#), 12:00 - 12:30 p.m. (SF)  
[APA PsycNET for Trial & New Product Users](#),  
1:00 – 2:00 p.m. (LA)

### Tuesday, October 7, 2014

[PsycINFO: Results Management](#), 10:00 - 10:30 a.m. (SF)  
[PsycINFO: Basic Search](#), 12:00 - 12:30 P.M. (SF)  
[Behind the Scenes of PsycINFO on EBSCOhost](#),  
1:00 – 2:00 p.m. (L)

### Wednesday, October 8, 2014

[PsycINFO: Advanced Search](#), 10:00 - 10:30 a.m. (SF)  
[PsycINFO: Results Management](#), 12:00 - 12:30 p.m. (SF)

### Tuesday, October 28, 2014

[Behind the Scenes of PsycINFO on ProQuest](#),  
1:00 – 2:00 p.m. (L)

### Tuesday, November 4, 2014

[Behind the Scenes of PsycINFO on OvidSP](#),  
1:00 – 2:00 p.m. (L)

### Wednesday, November 12, 2014

[Beyond Subject Searching in PsycINFO: APA PsycNET](#),  
2:00 – 3:00 p.m. (L)

### Monday, November 17, 2014

[PsycINFO: Basic Search](#), 10:00 - 10:30 a.m. (SF)  
[PsycINFO: Advanced Search](#), 11:00 - 11:30 a.m. (SF)  
[APA PsycNET for Trial & New Product Users](#),  
1:00 – 2:00 p.m. (LA)

### Tuesday, November 18, 2014

[Behind the Scenes of PsycINFO on All Platforms](#),  
1:00 – 2:00 p.m. (L)

### Wednesday, November 19, 2014

[PsycINFO: Results Management](#), 10:00 - 10:30 p.m. (SF)  
[PsycINFO: Basic Search](#), 12:00 - 12:30 p.m. (SF)  
[Beyond Subject Searching in PsycINFO: EBSCOhost](#),  
2:00 – 3:00 p.m. (L)

### Thursday, November 20, 2014

[PsycINFO: Advanced Search](#), 12:00 - 12:30 p.m. (SF)  
[PsycINFO: Results Management](#), 1:00 - 1:30 p.m. (SF)

### Wednesday, December 3, 2014

[Beyond Subject Searching in PsycINFO: ProQuest](#),  
2:00 – 3:00 p.m. (L)

### Monday, December 8, 2014

[APA PsycNET for Trial & New Product Users](#),  
1:00 – 2:00 p.m. (LA)

### Tuesday, December 9, 2014

[PsycINFO: Basic Search](#), 3:30-4:00 p.m. (SF)

### Wednesday, December 10, 2014

[Beyond Subject Searching in PsycINFO: OvidSP](#),  
2:00 – 3:00 p.m. (L)  
[PsycINFO: Advanced Search](#), 3:30-4:00 p.m. (SF)

### Thursday, December 11, 2014

[PsycINFO: Results Management](#), 3:30 – 4:00 p.m. (SF)



American Psychological Association  
750 First Street, NE  
Washington, DC 20002-4242

(800)-374-2722 | (202) 336-5650 | [psycinfo@apa.org](mailto:psycinfo@apa.org) | [www.apa.org/psycinfo](http://www.apa.org/psycinfo)

# Frequently Asked Questions From Our Users

We receive all kinds of questions from our users, especially students, on a daily basis. Although we aren't able to research the specific academic topics that they ask for help with, we are able to help by pointing them to our resources, training and APA, and directing them back toward their own libraries for answers. Here's a recent question that may resonate with you as you help students this term:

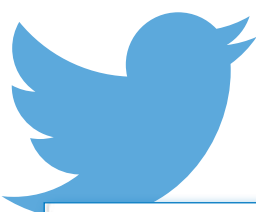
**Q** I'm a doctoral student and want to use items from the test Women's Self-Schema in my dissertation, which I very much hope to publish. Do I need permission to use it, and if so, how do I go about getting it?

**A** It takes several steps to resolve this. The first is determining whether this is a question properly directed to APA by finding out who publishes the content the user was referring to. In this case, the source is an APA resource, the *Journal of Personality and Social Psychology* from 1994.

The next step in the process is for the student to determine whether the content requires permission. APA copyright information, found at <http://www.apa.org/about/contact/copyright/index.aspx>, details what does and does not need permission.

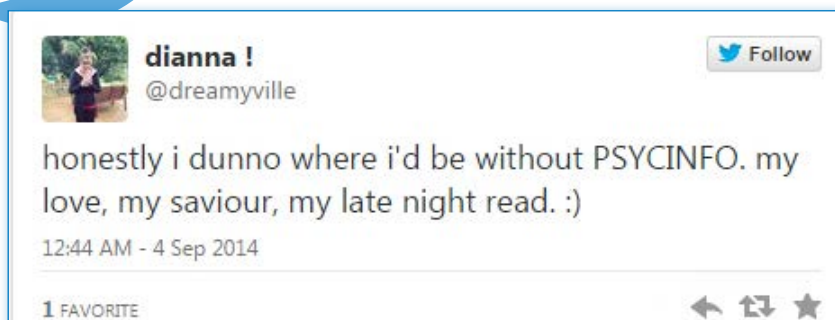
If the student is required to get permission for this content, they should review the instruction on how the attribution should be worded, as well as a stipulation that permission from one author should be sought. (If after making a good faith effort, the student cannot find the author—APA does not help—we will grant permission on our sole authority.)

The final step is to request permission, a process that is automated and explained on the APA webpage at <http://www.apa.org/about/contact/copyright/process.aspx>. APA has partnered with the Copyright Clearance Center to provide a web-based permission service using Rightslink®. The student now will browse our website to find the journal TOC and the specific article she wants to cite, where she'll find a link marked *Permissions* immediately below the title. Clicking that link leads one through setting up a Rightslink account and the rest of the process.



## Top Tweets

Every so often, a post on Twitter (or another social media platform) will catch our eye with the poster's enthusiasm for PsychINFO, or another APA database. We spotted this post in early September, just as the semester started at most institutions:



Follow us for news and updates, or share success stories from your users:



[@APAPsycNET](https://twitter.com/APAPsycNET)



[APAPsycNET](https://www.facebook.com/APAPsycNET)



American Psychological Association  
750 First Street, NE  
Washington, DC 20002-4242

(800)-374-2722 | (202) 336-5650 | [psycinfo@apa.org](mailto:psycinfo@apa.org) | [www.apa.org/psycinfo](http://www.apa.org/psycinfo)

# In Search of: Research in Feminism

Looking for resources to support a gender studies class? Meeting with a literature class focused on female authors? Don't forget to remind students that they can use PsycINFO to identify literature on topics such as sex roles and attitudes, feminist psychology, and more. A social sciences viewpoint can help to bolster an argument or provide a source of inspiration for an essay topic.

You can link to or download our Feminism Topic Guide (among many others) at <http://bit.ly/APATopicGuides>. There, you'll find a version suitable to print at your library, as well as a version that will enable you to easily copy portions of the guide for use in your own handouts and training materials.

In addition, a video tutorial of our Feminism Topic Guide is available for each of the major vendor platforms: APA PsycNET, EBSCOhost, ProQuest, and OvidSP. The video walks through each of the sample searches: <http://bit.ly/APAFeminismTG>.

Note that you can also order a quantity of this, or any other, Topic Guide to share with students, faculty, and teaching assistants – free of charge! Send your request to [psycinfo@apa.org](mailto:psycinfo@apa.org). ♦

## Feminism Resources in PsycINFO

PsycINFO®

**Topics in PsycINFO of Relevance to Feminism**

PsycINFO is a research database published by the American Psychological Association. Researchers exploring feminism in the behavioral sciences can use it to identify literature on topics such as sex roles and attitudes, feminist psychology, and more.

**Sample Searches in Feminism**

**Scenario:** A clinical psychology student is interested in learning more about the ways in which a feminist viewpoint can inform sessions with male clients.

**Search:** *Feminist Therapy*, use the Population Group limiter to select *Male*

**Results:** Book chapters and articles discussing ways that therapists can use the techniques of feminist therapy in treating boys and men with eating disorders, a history of violence or trauma, and more. Includes discussions of how male therapists can engage in feminist therapy.

**Scenario:** An organizational behavior researcher needs to learn more about the ways in which gender-based stereotypes about women play out in the workplace.

**Search:** *Sex Role Attitudes AND Working Women*

**Results:** Articles looking at the experience of women in a variety of careers, from those in the military or law enforcement to women in office environments.

**Scenario:** A women's studies major working on a paper for a literature class would like to supplement their own analysis with a couple of articles on the ways in which mothers and fathers balance caring for their children.

**Search:** *Child Care AND Division of Labor*

**Results:** Articles that look at gender equality in child care and household labor, as well as articles that also incorporate aspects of work-life balance.

ADEPT  
APA Database and Electronic Products Training Institute

AMERICAN PSYCHOLOGICAL ASSOCIATION

Our Feminism Topic Guide makes a great handout for students to refer to after an instruction session or a consult at the reference desk. Sample searches provide some examples to get students thinking about how to frame their topic when looking for behavioral sciences research, and a selected list of terms from the PsycINFO Thesaurus give them a starting point for their own research.

### Selected Search Terms

The search terms provided here are just a few excerpts from the many relevant terms in PsycINFO's thesaurus. If you aren't sure how to use these terms (called Subject Terms, Subject Headings, or Index Terms depending on your interface), check with your librarian or consult the PsycINFO Quick Reference Guide you may also have received at the same time as this handout.

<p><b>Social Justice</b></p> <ul style="list-style-type: none"> <li>◆ Civil Rights</li> <li>◆ Coalition Formation</li> <li>◆ Sex Discrimination</li> <li>◆ Social Change</li> <li>◆ Social Discrimination</li> <li>◆ Social Equality</li> <li>◆ Social Processes</li> <li>◆ Social Responsibility</li> <li>◆ Human Females</li> <li>◆ Daughters</li> <li>◆ Female Criminals</li> <li>◆ Mothers</li> <li>◆ Sisters</li> <li>◆ Widows</li> <li>◆ Wives</li> <li>◆ Working Women</li> </ul>	<p><b>Motherhood</b></p> <ul style="list-style-type: none"> <li>◆ Childlessness</li> <li>◆ Dual Careers</li> <li>◆ Family Size</li> <li>◆ Family Structure</li> <li>◆ Family Work Relationship</li> <li>◆ Matriarchy</li> <li>◆ Nuclear Family</li> <li>◆ Single Mothers</li> <li>◆ Stepparents</li> </ul> <p><b>Sex Roles</b></p> <ul style="list-style-type: none"> <li>◆ Division of Labor</li> <li>◆ Femininity</li> <li>◆ Masculinity</li> <li>◆ Patriarchy</li> <li>◆ Sex Role Attitudes</li> <li>◆ Sexism</li> </ul>	<p><b>Feminism</b></p> <ul style="list-style-type: none"> <li>◆ Activism</li> <li>◆ Feminist Psychology</li> <li>◆ Feminist Therapy</li> <li>◆ Social Movements</li> <li>◆ Psychology of Women</li> <li>◆ Women's Liberation Movement</li> </ul> <p><b>Reproductive Health</b></p> <ul style="list-style-type: none"> <li>◆ Abortion (Attitudes Toward)</li> <li>◆ Abortion Laws</li> <li>◆ Birth</li> <li>◆ Birth Control</li> <li>◆ Family Planning</li> <li>◆ Labor (Childbirth)</li> <li>◆ Obstetrical Complications</li> <li>◆ Pregnancy</li> </ul>
--	---	--

American Psychological Association | 750 First Street, NE | Washington, DC 20002-4242  
(800) 374-2722 | (202) 336-5650 | [psycinfo@apa.org](mailto:psycinfo@apa.org) | [www.apa.org/psycinfo](http://www.apa.org/psycinfo)

# PSYcINFO NEWS

PsycINFO News is published bimonthly by  
the PsycINFO® Department

American Psychological Association

750 First Street, NE • Washington, DC 20002-4242

Telephone: 800.374.2722 • 202.336.5650

• Fax: 202.336.5633

E-mail: [psycinfo@apa.org](mailto:psycinfo@apa.org)

Web: [www.apa.org/pubs/databases](http://www.apa.org/pubs/databases)

All organization, product, or service names mentioned are trademarks or service marks of their respective owners. Graphical software interfaces appearing in illustrations herein are copyright © by their manufacturers.



American Psychological Association  
750 First Street, NE  
Washington, DC 20002-4242

(800)-374-2722 | (202) 336-5650 | [psycinfo@apa.org](mailto:psycinfo@apa.org) | [www.apa.org/psycinfo](http://www.apa.org/psycinfo)