



**INTEGRATED**healthcare

Global Approaches to Integrated Care

*Translating Science and Best Practices Into Patient-Centered Health Care Delivery*

**American Psychological Association  
Capitol View Conference Center  
750 First Street, NE  
Washington, DC**

**November 2-5, 2015**

---

**OPENING RECEPTION  
MONDAY, NOVEMBER 2, 2015—5:30-7:30 PM**

**HOUSE OF SWEDEN**

2900 K. STREET NW  
WASHINGTON, DC 20007



AMERICAN  
PSYCHOLOGICAL  
ASSOCIATION

8:00—8:45 AM

**Breakfast**

*We request that you complete your meal prior to the Welcome at 8:45 AM.*

8:45 AM

Welcome and Overview of Summit



**Norman B. Anderson, PHD, CEO & Exec. Vice President (USA)**  
American Psychological Association

Norman B. Anderson, PhD, is the Chief Executive Officer and Executive Vice-President of the American Psychological Association. Dr. Anderson has served as a professor at both Duke University Medical School and the Harvard School of Public Health, and was the recipient of numerous awards for his research. He was also the founding associate director of the National Institutes of Health (NIH) in charge of behavioral and social sciences research, and was the first director of the NIH Office of Behavioral and Social Sciences Research. Dr. Anderson is a fellow of APA, the American Association for the Advancement of Science, the Society of Behavioral Medicine, the Academy of Behavioral Medicine Research, and the Association of Psychological Science. He was elected to membership in the Institute of Medicine of the National Academy of Science, and inducted into the Historically Black Colleges and Universities (HBCU) Hall of Fame for his work in science. He is a Past-President of the Society of Behavioral Medicine, and served as President of the Board of Directors for the Starbright Foundation. He earned a doctorate in clinical psychology from the University of North Carolina at Greensboro, was a psychology intern at Brown University School of Medicine, and was a post-doctoral fellow in psychophysiology and aging at Duke University School of Medicine.



**Barry S. Anton, PHD, ABPP, President (USA)**  
American Psychological Association

Barry S. Anton, PhD, ABPP, is a graduate of the University of Vermont and received his doctorate at Colorado State University. Following a clinical internship at the Harvard Medical School program at Massachusetts Mental Health Center, he completed post-doctoral training in child and adolescent clinical psychology and neuropsychology at the Judge Baker Children's Center and Boston Children's Hospital. Anton is board certified in child and adolescent clinical psychology and serves as a board member and examiner in child and adolescent clinical psychology for the American Board of Professional Psychology. Anton was a distinguished professor at the University of Puget Sound, then transitioned from teaching to pursue a full-time, interprofessional private mental health practice with a psychiatrist in 1985. Rainier Behavioral Health has grown since then, and now employs 17 clinicians, including psychiatrists, advanced registered nurse practitioners, psychologists and social workers. Rainier Behavioral Health provides integrated mental health care, serving more than 18,000 patient visits a year.

Long active in mental health advocacy and public policy, Anton served on the executive committee of the Washington State Psychological Association for 12 years and received numerous awards. Through the American Psychological Association, Anton became active in national advocacy and received the Karl F. Heiser Award for Advocacy and the State Leadership Award. Anton served as an APA council representative, an at-large member of the APA Board of Directors, was a member of eight APA task forces and work groups, and served two terms as APA recording secretary.

9:00-9:45 AM

**Opening Keynote: Global Perspective on Integrated Care**

**Reynaldo Holder, MD, MSc (USA)**  
Pan American Health Organization

Dr. Reynaldo Holder has 33 years of experience in the health sector, including 16 working in technical cooperation at the international level, 7 years in administrative responsibilities and eleven years as a Pediatrician. Currently he is the Regional Advisor in Hospitals and Integrated Health Care Delivery Systems at the Pan American Health Organization/World Health Organization (PAHO/WHO).

Dr. Holder is a specialist in organization and management of health systems and services both at the national and international level. He worked for five years as Regional Director for the San Miguelito Regional Health System in Panama, where he played an instrumental role in the design and implementation of the new management scheme for the San Miguelito Hospital and in the modernization of regional health services. Dr. Holder also worked as Regional Technical Director for the North East Regional Health Authority in Jamaica before joining PAHO/WHO in March 2002. Since joining PAHO/WHO he has worked in Belize, Barbados, the Eastern Caribbean Countries and now in the Washington D.C. regional office from where he supports technical cooperation to all Member States of the Pan American Health Organization.

Dr. Holder holds a Doctor in Medicine Degree from the *Instituto Superior de Ciencias Médicas de La Habana*, Cuba (1982); a Medical Specialist Degree in Pediatric Medicine from *Hospital del Niño*, Panama (1988); and a Master in Science in Health Services Management from the *Universidad Latina de Panama* (2002).

9:45-10:45 AM

**Panel #1: Global Models of Integrated Care**

**Moderator:** Antonette Zeiss, PhD

**Pamela Collins, MD, MPH (USA)**  
National Institute of Mental Health



**Shulin Chen, MD, PHD (China)**  
Zhejiang University



**Tor Levin Hofgaard, PHD (Norway)**  
Norwegian Psychological Association

10:45-11:00 AM

**Break—Refreshments**

AMERICAN  
PSYCHOLOGICAL  
ASSOCIATION

11:00-12:00 PM

Panel #2: Models of Financing

**Moderator:** Benjamin Miller, PSYD

**Stephen Melek, FSA, MAAA** (USA)  
Milliman, Inc.

**Marci Nielsen, PHD, MPH** (USA)  
Patient-Centered Primary Care Collaborative

**Kavita Patel, MD, MS** (USA)  
The Brookings Institute

12:00-12:45 PM

**Lunch**

***We request that you complete your meal prior to the Keynote at 12:45 PM.***

12:45-1:30 PM

*Keynote: Why is it difficult to get knowledge into practice? A review of the evidence.*



**Sue Dopson, PHD, MSC, BSC** (United Kingdom)  
University of Oxford

Dr. Sue Dopson is involved in a number of highly innovative executive development programmes. She teaches on the Oxford Advanced Management and Leadership Programme, Oxford Strategic Leadership Programme, Oxford Transition to Leadership Programme and Consulting and Coaching for Change. She has worked closely with organisations ranging from the Department of Health to Roche Pharmaceuticals and is involved in the development of courses for the NHS and Royal Mail Group.

Dr. Dopson's research centres on transformational change and knowledge exchange in the public and healthcare sectors. She has written and edited many major works on this topic and her research has informed and influenced government bodies such as the Department of Health and the National Institute for Health and Clinical Excellence (NICE) in their thinking on areas such as the dissemination of clinical evidence into practice, medical leadership and the role of the support worker in the NHS. She currently represents the University of Oxford as Non-Executive Director of the Oxford Health NHS Foundation Trust. She has a BSc in sociology, MSc in sociology with special reference to medicine MA (Oxon) and a PhD studying the introduction of general management into the NHS.

1:30-2:30 PM

Panel #3: Models of Education/Training

**Moderator:** Nancy Ruddy, PHD, ABPP



**John Gilbert, PHD, FCAHS** (Canada)  
University of British Columbia

**Katherine Sanchez, LCSW, PHD** (USA)  
University of Texas



**Jill Thistlethwaite, MBBS, MMED, PHD, FRCGP, FRACGP** (Australia)  
University of Technology

2:30-3:30 PM

Panel #4: Models for Dissemination of Evidence-Based Practices/  
Systems Change

**Moderator:** Rinad Beidas, PHD

**Arthur C. Evans, PHD** (USA)  
City of Philadelphia

**Kurt Stange, MD** (USA)  
Case Western University



**Sharon Straus, MD, FRCPC** (Canada)  
St. Michael's Hospital

3:30-3:45 PM

**Break and Transition to Groups**

3:45-5:00 PM

Working Group Session #1

*Each participant has been assigned to a group, and assignments will be announced on the day of the Summit.*

5:00 PM

Closing Remarks, Adjourn for the Day

**Acknowledgements**

This event is possible due to the generous financial support of the American Psychological Association (APA). The Summit program has been carefully planned by many individuals including a planning committee of members and professional staff of the American Psychological Association. The planning committee members are listed below, in addition, to key staff from various APA departments. However, while they are not listed, we wish to acknowledge the many APA staff in the various APA departments who have been assisting in planning the Summit and who will be staffing the Summit.

**Planning Committee**

- Mary Ann McCabe, PHD, ABPP
- Rinad Beidas, PHD
- Anne Kazak, PHD, ABPP
- Benjamin Miller, PSYD
- Bonnie Nastasi, PHD
- Nancy Ruddy, PHD, ABPP
- Brian Smedley, PHD
- Kari Stephens, PHD
- Antonette Zeiss, PHD

**Key APA Staff**

**Practice Directorate**

- Elena Eisman, EDD, ABPP
- Joan Freund
- Sheila Kerr-Wilson

**Office of International Affairs**

- Merry Bullock, PHD

**Center for Psychology and Health**

- Doug Tynan, PHD

8:00—8:45 AM

**Breakfast**

*We request that you complete your meal prior to the Welcome at 8:45 AM.*

8:45 AM

Welcome

9:00-9:45 AM

*Keynote: Social Determinants of Health*



**Adewale Troutman, MD, MPH, CPH (USA)**  
University of South Florida

Adewale Troutman, MD, MPH, CPH, identifies himself through his commitment to social justice, human rights, community activism, health equity and national and global health. His life's work has been a testimony to this fact. Dr. Troutman has over 40 years of dedication through action to the principles of universal freedoms and the elimination of racism, injustice and oppression. His unique educational background has been a major factor in this quest. Dr. Troutman has an MD from New Jersey Medical School, a Masters in Public Health from Columbia University, Masters in Black Studies from the State University of New York in Albany, and as of October 2009, board certification from the National Board of Public Health Examiners. He is a residency trained Family Physician graduating from residency at the Medical University of South Carolina. His career has included clinical emergency medicine, hospital administration, academic and public health practice. He served as an Associate Professor in the University of Louisville's School of Public Health and Information Sciences while directing the Metro Louisville Department of Public Health and Wellness. His experience includes special consultancies with the World Health Organization in Thailand and Japan, health assessment missions in Angola, Jamaica and Zaire and training in India and Austria.

9:45-10:45 AM

**Panel #5: Health Promotion, Prevention and Wellbeing**

**Moderator:** Bonnie Nastasi, PHD



**Nav Chana, MA, ED, MBBS, FRCGP (United Kingdom)**  
National Association of Primary Care

**Parinda Khatri, PHD (USA)**  
Cherokee Health Systems

**Ronald Manderscheid, PHD (USA)**  
National Association of County Behavioral Health and  
Developmental Disability Directors

10:45-11:00 AM

**Break—Refreshments**

---



AMERICAN  
PSYCHOLOGICAL  
ASSOCIATION

11:00-12:00 PM

Panel #6: Demographics, Culture and Health Disparities

**Moderator:** Brian Smedley, PHD

**Carlos Castillo-Salgado, MD (USA)**  
Johns Hopkins Bloomberg School of Public Health

**Larke Huang, PHD (USA)**  
Substance Abuse and Mental Health Services Administration



**Alex Scott-Samuel, MB, ChB MCommH, FFPH (United Kingdom)**  
University of Liverpool

12:00-12:45 PM

**Lunch**

*We request that you complete your meal prior to the Keynote at 12:45 PM.*

12:45-1:30 PM

*Keynote: Harnessing the Power of Measurement and Technology*



**John Fortney, PHD (USA)**  
University of Washington

John C. Fortney, Ph.D. is a Professor in the Department of Psychiatry and Behavioral Sciences at the University of Washington School of Medicine, and the Director of the Division of Population Health. He is also a Core Investigator at the HSR&D Center for Innovation for Veteran-Centered and Value-Driven Care at the VA Puget Sound Health Care System, and the Director of the VA Virtual Specialty Care QUERI Center. For the last 25 years, Dr. Fortney's research has focused on access to care. He has published a framework for conceptualizing access to care in the digital age that incorporates virtual care technologies. He has conducted clinical trials to test the effectiveness of virtual care technologies to facilitate the delivery of evidence-based mental health services in rural primary care clinics. He has also conducted implementation trials to test the effectiveness of strategies to promote the uptake of virtual care technologies by primary care patients and providers. His research has been supported by NIMH, NIAAA, PCORI, and VA HSR&D.

1:30-2:30 PM

Panel #7: Measurement of Cost, Quality and Outcome Evaluation

**Moderator:** Anne Kazak, PHD, ABPP

**Ashlie Wilbon, MS, MPH, FNP-C**  
National Quality Forum

**James Witter, MD, PHD, FACR (USA)**  
National Institute of Arthritis and Musculoskeletal and Skin Diseases



**Henrica CW de Vet, PHD (Netherlands)**  
VU University Medical Center

2:30-3:30 PM

Panel #8: Emerging Technologies

**Moderator:** Kari Stephens, PHD

**Patricia Areán, PHD (USA)**  
University of Washington

**David Mohr, PHD (USA)**  
Northwestern University

**Wilson Pace, MD (USA)**  
DARTNet Institute

3:30-3:45 PM

**Break and Transition to Groups**

3:45-5:00 PM

Working Group Session #2

***Each participant has been assigned to a group, and assignments will be announced on the day of the Summit.***

5:00 PM

Closing Remarks, Adjourn for the Day

---

**Sponsors for the Summit**

**Platinum**

- APA Division 53: Society of Clinical Child and Adolescent Psychology
- Pearson, Inc.

**Gold**

- APA Division 38: Health Psychology

**Silver**

- APA Division 29: Society for the Advancement of Psychotherapy

**Bronze**

- APA Assembly of Scientist/Practitioner Psychologists
- Association of State and Provincial Psychology Boards (ASPPB)
- Association of Practicing Psychologists

- APA Caucus of State, Provincial and Territorial Representatives
- APA Division 16: School Psychology
- APA Division 22: Rehabilitation Psychology
- APA Division 54: Society of Pediatric Psychology
- National Register of Health Service Psychologists

**Donors**

- APA Division 37: Society for Child and Family Policy and Practice
- APA Division 31: State, Provincial and Territorial Psychological Association Affairs
- Lisa Grossman, JD, PHD, ABPP

Conference will be livestreamed at:  
[www.apa.org/about/governance/president/summit.aspx](http://www.apa.org/about/governance/president/summit.aspx)  
Livestream sponsored by:

**PEARSON**

Clinical Assessment



8:00—8:45 AM

**Breakfast***We request that you complete your meal prior to the Welcome at 8:45 AM.*

8:45 AM

Welcome

9:00-9:45 AM

*Keynote: The Imperative to Anchor Care in Patient Needs & Perspectives*
**Dave deBronkart—"e-Patient Dave" (USA)**  
 Society for Participatory Medicine

**Dave deBronkart**, known online as "**e-Patient Dave**," is the most widely known example of the e-patient movement: "empowered, engaged, equipped, enabled." After beating Stage IV kidney cancer with great medicine, great clinicians, and great practical advice from an internet patient group, he is today using his "free replay in life" to advocate for transforming health and care to listen to the patient's perspective and look differently at the role of the patient. He is co-founder and volunteer co-chair of the Society for Participatory Medicine and has spoken at over 400 events in fourteen countries; his TED Talk *Let Patients Help* has nearly a half million views.

Acceptance of his views by academia has been strong: in 2012 the National Library of Medicine began archiving Dave's blog in its history of medicine, in 2014 he addressed audiences in medical education and certification at the Association of American Medical Colleges and the 100th annual meeting of the National Board of Medical Examiners, and in 2015 he was the Mayo Clinic's Visiting Professor in Internal Medicine. He has authored two invited essays in the BMJ, sits on their editors' Patient Advisory Panel, and in 2015 was lead author of an article in the *Journal of Oncology Practice*.

9:45-10:30 AM

**Panel #9: Summaries – Work Group Recommendations for Next Steps**

Group representatives will be asked to report on recommendations for next steps.

10:30-10:45 AM

**Break—Refreshments**

10:45-11:30 AM

Panel #10: Reactions/Reflections – Special Populations

**Moderator:** Susan McDaniel, PHD

**Joan Asarnow, PHD** (USA)  
University of California, Los Angeles

**Robyn Golden, LCSW** (USA)  
Rush Medical Center

**Arthur Evans, PHD** (USA)  
City of Philadelphia

11:30-12:15 PM

Panel #11: Reactions/Reflections – International Perspectives

**Moderator:** Susan McDaniel, PHD



**Shulin Chen, MD, PHD** (China)  
Zhejiang University



**Telmo Mourinho Baptista, PHD** (Portugal)  
University of Lisbon



**Jill Thistlethwaite, MBBS, MMED, PHD, FRCGP, FRACGP** (Australia)  
University of Technology

12:15 PM

Looking Forward, Next Steps

12:30 PM

Adjourn

---

American Psychological Association  
750 First Street, NE  
Washington, DC 20002



AMERICAN  
PSYCHOLOGICAL  
ASSOCIATION

## **PANELISTS**



### **Patricia Areán, PhD**

Patricia A. Areán, PhD, is a Professor in the Department of Psychiatry and Behavioral Sciences at University of Washington, and the Director for Targeted Treatment Development Research at UW. Dr. Areán is an international expert on effectiveness of behavioral interventions for mood disorders in special populations such as older adults and ethnic minorities. Her work focuses on increasing access to and implementing user friendly behavioral interventions for mood as it presents in chronic illness, aging, low income and ethnic minority populations, in a variety of service settings and mobile platforms. Her team combines latest information from cognitive neuroscience, socio-economics and implementation science in their designs. Dr. Areán has published 120 peer-reviewed articles and she has been funded by SAMHSA, NIMH, NIA, NIDDK and the Hartford Foundation. She is currently funded by NIMH to study the effectiveness of "brain games" and mental health apps on mood. Dr.

Areán also provides training in evidence-based treatments to community mental health and health professionals, and is developing deployable and cost effective training models based on contemporary adult learning methods.

### **Joan Asarnow, PhD**

Joan Asarnow, PhD, is a clinical psychologist and Professor of Psychiatry and Biobehavioral Sciences at UCLA. As President of Division 53 of the American Psychological Association (2014, Child/Adolescent Clinical Psychology), she developed and still leads a national initiative on enhancing health and behavioral health care systems and improving care for children and families. Her current work focuses on treatments and interventions for youth suicide/suicide attempt prevention, depression, and integrated primary medical and behavioral health care. She has led efforts to disseminate evidence-based treatments for child and adolescent depression and suicide prevention. Two programs developed by Dr. Asarnow are listed in the National Registry for Evidence-Based Programs (SAMHSA): 1) Depression Treatment Quality Improvement, an evidence-based depression treatment program that has been integrated within primary care, mental health, and other settings; 2) the Family Intervention for Suicide Prevention, a crisis treatment for youths after a suicidal/self-harm episode. Dr. Asarnow has received grants from the National Institute of Mental Health, Centers for Disease Control, Agency for Healthcare Research and Quality, American Foundation for Suicide Prevention, and other organizations. At UCLA, she directs the Youth Stress and Mood Program, a depression and suicide prevention program with clinical, educational, and research components.



### **Telmo Mourinho Baptista, PhD**

Born in Lisbon, Portugal he got his PhD from the University of Lisbon in Psychotherapy. University professor at the University of Lisbon and a professional in the areas of clinical psychology, health psychology and psychotherapy. He is currently the President of the Portuguese regulatory board for psychologists (Ordem dos Psicólogos Portugueses) of which he was a founder. He is also the president of EFPA (European Federation of Psychology Associations) and of PSIPLP (Federation of the Associations of Portuguese Speaking Countries). From 2012-2014 he was the president of FIAP (The Iberoamerican Federation of Psychology Associations). His current interests cover health policies and the contribution of psychological knowledge and practice for the implementation of the UN Sustainable Development Goals.

### **Carlos Castillo-Salgado, MD**

Dr. Carlos Castillo-Salgado is a Professor of the Department of Epidemiology of the Bloomberg School of Public Health with joint appointments in the Department of Population, Family & Reproductive Health and the School of Medicine, Johns Hopkins University. Also, Dr. Castillo-Salgado has been a Courtesy Professor of the College of Public Health, University of South Florida and Visiting Professor in most of the schools of public health in Latin America and Spain. He has pioneered the development of applied and field epidemiology training programs for public health professionals in the Americas. He received a J.D. with Honorable Mention in 1972 from the Law School of the Universidad Autonoma de Guadalajara, an M.D. (Médico Cirujano) in 1978 from the Universidad Nacional Autónoma de México, an M.P.H. and Dr.PH. for the School of Hygiene and Public Health, Johns Hopkins University (1981 and 1988). Dr. Castillo-Salgado is Board Certified in Public Health (CPH) from the National Board of Public Health Examiners and Member of the NBPHE's Charter Class (2008). Currently, Dr. Castillo-Salgado is the Director of the DrPH in Epidemiology Program, Director of the Global Public Health Observatory of the Bloomberg School of Public Health and Director of the Certificate Training Program in Epidemiology for Public Health Managers.



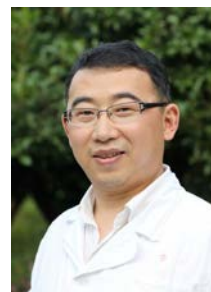


#### **Nav Chana, MA, ED, MBBS, FRCGP**

Dr. Nav Chana is Chairman of the National Association of Primary Care. Dr. Nav Chana is a GP and senior partner at the Cricket Green Medical Practice where he has been a GP for 21 years. He has been appointed as Joint Director of Education Quality (DEQ) for Health Education South London, having previously been the Postgraduate Dean for General Practice and Community Based Education from 2010. Nav has been involved in many aspects of medical education with a career spanning 19 years. As Chairman of the National Association of Primary Care (NAPC) also serves as the clinical lead for primary care innovation. Nav's interests include driving quality in primary care, aligning service with education and creating systems to deliver population based healthcare.

#### **Shulin Chen, MD, MPH**

Dr. Shulin Chen is a Professor of Psychiatry at Zhejiang University. He has an MD in the field of medicine from Hunan Medical University, Changsha, CHN, and an MA in medicine from Zhejiang University, Hangzhou, CNH. In addition, he has a PhD from Central South University, Changsha, CHN. Dr. Chen has postdoctoral education and training from the Chinese University of Hong Kong, Hong Kong and the University of Rochester, Rochester, NY, USA. In 2010, he was awarded an R01 grant from the NIH Fogarty Center to examine the effectiveness of the intervention on late life depression in urban clinics. He is establishing connections with health and aging services administrations in Zhejiang and at the central government level, policy makers in China; geriatric psychiatry and health services research as emerging areas; and about the importance that the government is placing in primary care as the site for chronic disease management. As an emerging leader in geriatric mental health services research in China, Dr. Chen is well positioned to conduct the COACH study (awarded by NIMH in 2013), and equally importantly, to use its findings to influence the development of policy concerning design and delivery of rural mental health care for the large and rapidly growing population of older adults in China.



#### **Pamela Collins, MD, MPH**

Dr. Collins received her MD from Cornell University Medical College and an MPH from Columbia University School of Public Health. She retains her faculty appointments at Columbia, where she is an assistant professor of clinical epidemiology at the Mailman School of Public Health (MSPH), and assistant professor of clinical psychiatry at the College of Physicians and Surgeons. Dr. Collins directed the Interdepartmental Global Health Track and was co-director of the Initiative for Maximizing Student Diversity at the MSPH. Dr. Collins joined NIMH in July as Associate Director for Special Populations and Director of the Offices for Special Populations, Rural Mental Health Research, and Global Mental Health. As an assistant professor in the departments of epidemiology and psychiatry at Columbia University, Dr. Collins conducted research on the mental health aspects of the AIDS epidemic and worked to ensure access to HIV prevention and care for people with severe mental illness as well as access to mental health care services for people with HIV domestically and internationally. Under Dr. Collins, NIMH will increase its focus on disparities in mental health both inside and outside of the United States.

#### **Henrica CW de Vet, PHD**

Henrica CW de Vet is Professor in Clinimetrics, at the Department of Epidemiology and Biostatistics, VU University Medical Center, Amsterdam. She is clinical epidemiologist by training and her focus is on methodological research. She has special expertise on the development and improvement of measurement instruments. She has been involved in the development of internationally-accepted methodological standards of, among others, reporting of diagnostic studies (STARD initiative), the quality of measurement instruments (COSMIN) and economic evaluations (CHEC). Henrica CW de Vet is first author of the book "Measurement in Medicine," Cambridge University Press 2011. She performed methodological research in several fields, such as musculoskeletal disorders, palliative and end-of-life care, and cancer, publishing on validity, reliability and interpretability of outcome measures. In her research she focuses on the measurement of health status and quality of life of patients, but also on quality of health care. She has much expertise on the use of patient reported outcomes in health care research and clinical practice and is involved in the Dutch-Flemish PROMIS group promoting the use of IRT questionnaires in health care settings.



#### **Arthur C. Evans, PHD**

Policymaker, clinical and community psychologist, healthcare innovator, Arthur C. Evans Jr., PhD, is the Commissioner of Philadelphia's Department of Behavioral Health and Intellectual disability Service (DBHIDS) – a \$1 billion healthcare agency. In addition, Dr. Evans holds faculty appointments at the University of Pennsylvania School Of Medicine and the Philadelphia College of Osteopathic Medicine and has held faculty appointments at the Yale University School of Medicine and Quinnipiac University. Often hailed as a visionary, Dr. Evans has been recognized nationally for his work in behavioral healthcare policy and the transformation of service delivery systems. In 2015 he was recognized by the White House as an "Advocate for Action" by the Office of National



Drug Control Policy. In 2013, he received the American Medical Association's top government service award in health care, the Dr. Nathan Davis Award for Outstanding Government Service, for his leadership in transforming the Philadelphia behavioral health system, particularly around the adoption of a public health approach. Dr. Evans is also regarded as a strong advocate for people experiencing behavioral health conditions and was recognized by Faces and Voices of Recovery with the Lisa Mojer-Torres Award.

#### **John Gilbert, PHD, FCAHS**

Dr. John Gilbert is founding Principal & Professor Emeritus, College of Health Disciplines, University of British Columbia where he was also founding Director of the School of Audiology and Speech Sciences, and Director of the School of Rehabilitation Sciences. He has received many honours and awards. He has served on many committees and Boards, locally, nationally and internationally, including Health Canada's Health Education Policy Taskforce; the Boards of the Michener Institute for Applied Health Sciences in Toronto; the British Columbia Health Education Foundation; the School of Health Sciences Advisory Committee of the Justice Institute of BC, and is appointed by the Minister of Health to serve on British Columbia's Patient Care Quality Review Board. He is a member of the Editorial Board of the Journal of Interprofessional Care, and Co-Editor of the open access Journal of Research in Interprofessional Education. He is Senior Scholar, WHO Collaborating Centre on Health Workforce Planning and Research, Dalhousie University; and Adjunct Professor, Faculty of Graduate Studies, Dalhousie University. He has served as a visiting Adjunct Professor at the National University of Malaysia; as an advisor to the International Institute for Leadership in Interprofessional Education at Manipal University, India; was Co-Chair of the WHO Study Group on Interprofessional Education and Collaborative Practice, and currently serves on the Advisory Committee on social determinants of health at the WHO.



#### **Robyn Golden, LCSW**



Robyn Golden, LCSW, serves as the Director of Health and Aging at Rush University Medical Center in Chicago where she also holds academic appointments in the Departments of Preventive Medicine, Nursing, Psychiatry, and Health Systems Management. She is responsible for developing and overseeing health promotion and disease prevention, mental health, care coordination, and transitional care services for older adults, family caregivers, and people with chronic conditions. For over 25 years, Ms. Golden has been actively involved in service provision, program development, education, research and public policy aimed at developing innovative initiatives and systems integration to improve the health and well-being of older adults and their families. In 2003-04, she was the John Heinz Senate Fellow based in the office of Senator Hillary Rodham Clinton in Washington, D.C. Ms. Golden is also a past chair of American Society on Aging and currently co-chairs the National Coalition on Care Coordination. She also is a fellow of the Gerontological Society of America. Ms. Golden holds a Master's degree

from the School of Social Service Administration at the University of Chicago and Bachelors degree from Miami University.

#### **Tor Levin Hofgaard, PHD**

Dr. Hofgaard has since 2007 been the elected full time president of the Norwegian Psychological Association, which organize 90 % of psychologists in Norway. He is responsible for advocacy, lobbying, strategic planning and public relations. Dr. Hofgaard is vice-president of The international union for psychological science (IUPsyS) which represents over 80 psychology associations around the world. He is also in the Executive Council of the European Federation of Psychologists' Associations (EFPA), which represents 36 member associations in Europe. Dr. Hofgaard is chair of the board for The Norwegian Council for Mental Health (NCMHL), a humanitarian organization promoting science and information, and that includes the majority of institutions and organizations involved in the field of mental health. He is also a board member of the largest Federation of associations for academics in Norway "The Federation of Norwegian Professional Associations." Dr. Hofgaard graduated from the University of Oslo, and specialized in clinical work with adults. He has a university degree in political science, and has been a military officer in the Royal Norwegian Navy. He has been working with drug addiction and psychosis, both in acute ward and in outpatient clinics, along side a private practice with a variety of clients.



#### **Larke Huang, PHD**



Larke Nahme Huang, PhD, a licensed clinical-community psychologist, is a Senior Advisor in the Administrator's Office of Policy Planning and Innovation at the Substance Abuse and Mental Health Services Administration (SAMHSA) in the U.S. Department of Health and Human Services. In this position she provides leadership on national policy for mental health and substance use issues for children, adolescents and families and leads the Administrator's strategic initiative on Trauma and Justice. She is also the Director of SAMHSA's Office of Behavioral Health Equity which was legislated by the Patient Protection and Affordable Care Act (health reform). In 2009, she did a six months leadership exchange at the Centers for Disease Control and Prevention (CDC) where she was the Senior Advisor on Mental Health. In 2003, Dr. Huang served as an appointed Commissioner on the President's New Freedom Commission on Mental Health. She was a member of the Carter Center Mental Health Board, the APA Committee on Children, Youth and Families, the Advisory Committee for the APA Minority Fellowship Program, and a founding board member of the National Asian American/Pacific Islander Mental Health Association, and the National Alliance of Multi-Ethnic Behavioral Health Associations. She received her doctorate from Yale University.

**Parinda Khatri, PhD**

Parinda Khatri is Chief Clinical Officer at Cherokee Health Systems, a comprehensive community health care organization with 57 clinical sites in 14 counties in Tennessee. She earned her doctorate in clinical psychology at the University of North Carolina at Chapel Hill and completed a Post-Doctoral Fellowship in Behavioral Medicine at Duke University Medical Center. As Chief Clinical Officer at Cherokee Health Systems, she provides oversight and guidance on clinical quality, program development and management, workforce development, clinical research, and clinical operations for blended primary care and behavioral health services within the organization. Dr. Khatri also trains, consults, and presents extensively on integrated care. She also leads Cherokee's APA-accredited Psychology Internship Program and the Association of Psychology Postdoctoral and Internship Centers Health Psychology Post-Doctoral Fellowship. Dr. Khatri is past-president of the Collaborative Family Healthcare Association. She is on the Governor's Technical Advisory Group for Patient Centered Medical Home

for the state of Tennessee and is a member of the Research Advisory Committee for the Transdisciplinary Collaborative Centers for Health Disparities at Morehouse School of Medicine. Dr. Khatri is also a member of the National Integration Academy for the Agency for Healthcare Research and Quality (AHRQ).

**Ronald Manderscheid, PhD**

Ron Manderscheid, PhD, serves as the Executive Director of the National Association of County Behavioral Health and Developmental Disability Directors. The Association represents county and local authorities in Washington, D.C., and provides a national program of technical assistance and support. Concurrently, he is Adjunct Professor at the Department of Mental Health, Bloomberg School of Public Health, Johns Hopkins University, and Past President of ACMHA—The College for Behavioral Health Leadership. Dr. Manderscheid serves on the boards of the Employee Assistance Research Foundation, the Danya Institute, the FrameWorks Institute, the Council on Quality and Leadership, the International Credentialing and Reciprocity Consortium, and the National Research Institute. He also serves as the Co-Chair of the Coalition for Whole Health. Previously, he served as the Director of Mental Health and Substance Use Programs at the Global Health Sector of SRA International and in several federal leadership roles in the U.S. Department of Health and Human Services. Throughout his career, he has emphasized and promoted peer and family concerns.

**Susan McDaniel, PhD**

Susan H. McDaniel, PhD, is the Dr. Laurie Sands Distinguished Professor of Families & Health, Director of the Institute for the Family in Psychiatry, Associate Chair of Family Medicine, and Director of the Physician Faculty Communication Coaching Program at the University of Rochester Medical Center. Dr. McDaniel is the 2015 President-Elect of the American Psychological Association. Most recently, she served with Nadine Kaslow PhD on the Special Committee overseeing the Hoffman investigation of APA. An APA fellow and long-time member of the Practice Organization (APAPO), Dr. McDaniel has been President of the Society for Family Psychology, Chair of the Publications & Communications Board, member of the Committee for Advancement of Professional Practice, the Council of Representatives and the Board of Directors. Dr. McDaniel's career is dedicated to integrating psychological science and practice into healthcare. She is the author of 15 books translated into 8 languages, and over 100 journal articles. She was the Co-Editor with family physician, Tom Campbell, MD, of the interdisciplinary journal, *Families, Systems & Health* for 12 years, and currently is an Associate Editor of the *American Psychologist*. Dr. McDaniel has received numerous awards for her work on integrated healthcare from medical and psychological organizations.

**Stephen Melek, FSA, MAAA**

Steve Melek, FSA, MAAA, is a principal and consulting actuary with the Denver Health practice of Milliman. He joined the firm in 1990. Steve's areas of expertise include healthcare product development, management, and financial analyses. He has worked extensively in the behavioral healthcare specialty field. He has worked with many managed behavioral healthcare organizations, parity issues and cost analyses, mental health utilization and costs in primary care settings, psychotropic drug treatment patterns, and strategic behavioral healthcare system design. He has experience with plan design, pricing, capitation and risk analysis, provider reimbursement analysis and strategies, healthcare revenue distribution, and utilization management analysis. He has completed valuations and projections of healthcare businesses and product lines, profitability and experience analysis, reinsurance analysis, pricing model and strategy development, and actuarial liability determination. Steve has advised HMOs, PPOs, managed care organizations, behavioral healthcare firms and associations, insurance companies, employers, hospitals, physician groups, PHOs, and state insurance companies. Steve is a Fellow of the Society of Actuaries, and member of the American Academy of Actuaries and Master Fellow of the Life Office Management Association. He has chaired and served on various Society of Actuaries' and American Academy of Actuaries' task forces and working groups, most of which have been focused on behavioral healthcare issues. He has a BA in mathematics from the Illinois Institute of Technology.





#### **David Mohr, PhD**

David C. Mohr, PhD, is a professor in Northwestern University's Departments of Preventive Medicine, Psychiatry, and Medical Social Sciences, and the Director of Northwestern University's Center for Behavioral Intervention Technologies (CBITs; [www.cbits.northwestern.edu](http://www.cbits.northwestern.edu)). CBITs is a leading research center developing web and mobile interventions targeting behavior to improve health, mental health, and wellness. The center currently supports more the 50 projects worldwide. Dr. Mohr's work is at the intersection of behavioral science, technology, and clinical intervention research, and has focused on developing, optimizing, and evaluating interventions that harness wireless and web-based technologies to promote mental health and wellness. His current research focuses on the areas: 1) the development and evaluation of web and mobile interventions for depression; 2) the development of cost-effective coaching models designed to improve adherence to and the efficacy of digital treatment tools; 3) digital tools to optimize processes of care and outcomes in

pharmacotherapy for depression delivered in primary care; and 4) the use of phone sensor data to create objective behavioral markers of depression. His work, funded by multiple NIH grants, has resulted in over 150 peer-reviewed publications, and more than 25 book chapters.

#### **Marci Nielsen, PhD, MPH**

Marci Nielsen, PhD, MPH, is the Chief Executive Officer of the Patient-Centered Primary Care Collaborative (PCPCC). Marci held previous positions as: Vice Chancellor for Public Affairs and Associate Professor at the University of Kansas School of Medicine; Executive Director of the Kansas Health Policy Authority (KHPA) -- the single state agency managing Medicaid, the State Children's Health Insurance Program, the State Employee Health Plan, health information technology and health policy; the health lobbyist and assistant director of legislation for the American Federation of Labor and Congress of Industrial Organizations (AFL-CIO); and legislative assistant to US Senator Bob Kerrey (D-Nebraska). She is on the Board of Directors for the American Board of Family Medicine and the National Academy for State Health Policy, was a committee member for the Institute of Medicine's Leading Health Indicators for Healthy People 2020 and Living Well with Chronic Illness: A Call for Public Health Action. Early in her career she served as a Peace Corps volunteer and in the US Army Reserves. She holds a PhD from Johns Hopkins School of Public Health, an MPH from George Washington University, and a BS in biology and psychology from Briar Cliff College.



#### **Wilson Pace, MD, FAAFP**

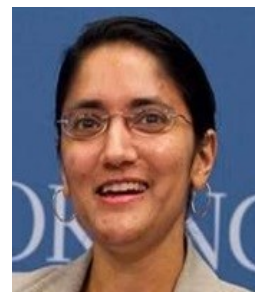
Wilson D. Pace, MD, FAAFP is a Professor of Family Medicine at the University of Colorado, Denver, the Green-Edelman Chair Emeritus for Practice-based Research, and the Chief Executive Officer of the DARTNet Institute. Dr. Pace's research focuses on patient centered health information technology, behavioral change, practice reorganization and patient safety. His patient safety work has included significant work on the further development of databases for collecting patient safety events, a taxonomy for describing safety events and analysis techniques using the taxonomy. He served on the Institute of Medicine's committee studying the recognition and prevention of medication errors which resulted in the report entitled "Preventing Medication Errors." His behavioral change work has involved multiple technology related projects as well as projects studying novel biomarkers to track improved physical activity and diet. Other projects have focused on improving care for depression in general, post-partum depression specifically, asthma and chronic kidney disease. He is the primary architect of the DARTNet Institute, a collaborative of electronic health record

enabled research networks. DARTNet provides infrastructure support to research networks using existing electronic health data and a learning community for researchers. The DARTNet collaborative currently included twelve networks, ten academic health centers and five CTSAs.



#### **Kavita Patel, MD, MS**

Dr. Kavita Patel is a Nonresident Senior Fellow at the Brookings Institution. Previously, Dr. Patel was managing director of clinical transformation at the Center for Health Policy and lead research on delivery system reform, healthcare financing, physician payment reform, and healthcare workforce development. Dr. Patel is also a practicing primary care physician at Johns Hopkins Medicine and a clinical instructor at UCLA's Geffen School of Medicine. Dr. Patel was previously a Director of Policy for The White House under President Obama and a senior advisor to the late Senator Edward Kennedy. Her prior research in healthcare quality and community approaches to mental illness have earned national recognition and she has published numerous papers and book chapters on healthcare reform and health policy. She has testified before Congress several times and she is a frequent guest expert on CBS, NBC and MSNBC as well as serving on the editorial board of *Health Affairs*.





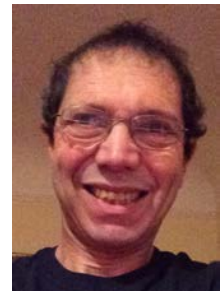


#### **Katherine Sanchez, LCSW, PhD**

Katherine Sanchez, LCSW, PhD, is an Assistant Professor at The University of Texas at Arlington School of Social Work. Dr. Sanchez practiced as a bilingual clinical social worker for 15 years, primarily in medical settings with monolingual Spanish-speaking populations before getting her PhD. Her principal area of research is in integrated health care and the provision of socio-culturally, linguistically adapted models for the treatment of co-morbid mental and physical illness. Dr. Sanchez has an additional research agenda to translate the evidence in integrated health care by training culturally diverse, bilingual social workers in evidence-based interventions proven effective for racial and ethnic minority populations. Dr. Sanchez was recently awarded a three year, \$400,000 grant from the NIH National Institute on Minority Health and Health Disparities (NIMHD). Her project, METRIC: Measurement, Education and Tracking in Integrated Care: Strategies to Increase Patient Engagement and Reduce Mental Health Disparities among Hispanics will screen Hispanic patients in a community health center for depression and implement a Measurement-Based Integrated Care (MBIC) model with collaborative, multi-disciplinary treatment and culturally tailored care management strategies and test a Depression Education Fotonovela (DEF) designed to increase disease literacy, and dispel myths about depression and its treatment among Hispanic patients, thus reducing stigma and increasing treatment engagement.

#### **Alex Scott-Samuel, MB, ChB MCommH, FFPH**

Dr. Scott-Samuel qualified in medicine at the University of Liverpool in 1971, and took a Masters in Community Health in 1976. From 1978-94 he was a consultant in Public Health with Liverpool Health Authority. Since 1994 he has been Senior Clinical Lecturer in the Division of Public Health at the University of Liverpool, where he directs IMPACT (the International Health Impact Assessment Consortium); Liverpool Public Health Observatory and EQUAL (the Equity in Health Research and Development Unit). Dr. Scott-Samuel's chief research interests are in health impact assessment, health politics and policy, and health inequalities. In addition, he lead the health promotion module on the Liverpool MPH course. From 1979-85 Dr. Scott-Samuel was founding editor of the journal *Radical Community Medicine* (now *Critical Public Health*). Together with Peter Draper, he established the Public Health Alliance (now the UK Public Health Association) in 1986. In 2003, he was a co-founder of the Politics of Health Group, and is currently Vice Chair of the Pioneer Health Foundation (founders of the Peckham Experiment).

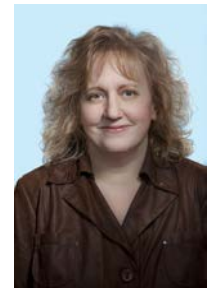


#### **Kurt Stange, MD**

Kurt C. Stange, MD, PhD is a family physician and epidemiologist with an active clinical practice. At Case Western Reserve University he is the Gertrude Donnelly Hess, MD Professor of Oncology Research, and Professor of Family Medicine, Epidemiology & Biostatistics, Oncology and Sociology. Dr. Stange is an American Cancer Society Clinical Research Professor. He serves as editor for the peer-reviewed, indexed, primary care research journal, the *Annals of Family Medicine*, and directs the multi-site Center for Research in Family Practice and Primary Care, one of three research centers funded by the American Academy of Family Physicians. Dr. Stange is actively engaged in ongoing basic and applied research that aims to understand the core structures and processes of primary care practice and their effect on preventive service delivery and patient outcomes, and to discover new methods of enhancing the comprehensive, integrative and relationship-centered generalist approach to patient care. He is a Past-President of the North American Primary Care Research Group, and is a member of the Institute of Medicine of the National Academy of Sciences.

#### **Sharon Straus, MD, FRCPC**

Dr. Straus is a Professor in the Department of Medicine at the University of Toronto. She holds a Tier 1 Canada Research Chair in Knowledge Translation and Quality of Care and more than \$30 million in peer reviewed research grants as a principal investigator. She has >300 publications, and has supervised >25 graduate students from different disciplines including clinical epidemiology, health informatics and human factors engineering. She is co-PI of KT Canada, a CIHR and CFI funded national, Clinical analysis teaResearch Initiative, PI of KT Canada's CIHR-funded Strategic Training Initiative in Health Research and PI of a network meta-m grant for the Drug Safety and Effectiveness Network. She is Division Director of Geriatric Medicine at the University of Toronto and Director of the KT Program at the Li Ka Shing Knowledge Institute of St. Michael's. She has authored three books. Evidence-based medicine: How to practice and teach it is in its fourth edition, and has been published in nine languages; Knowledge Translation in Health Care, is now in its second edition; and the first edition of Mentorship in Academic Medicine.







**Jill Thistlethwaite, MBBS, MMED, PHD, FRCGP, FRACGP**

Professor Jill Thistlethwaite, MBBS, PhD, MMED, FRCGP, FRACGP, is a health professions education consultant and general practitioner (family physician) in Sydney, Australia. Jill trained as a physician at University College London and worked as a general practitioner in a semi-rural family practice in Yorkshire, UK. In the late 1990s she was senior lecturer in community-based education at the University of Leeds. In 2003 Jill moved to Australia. Her main interests are interprofessional education (IPE), communication skills and professionalism. In 2010 she was a member of the World Health Organization's study group on IPE. Jill has written and edited 10 books with another two in press, many book chapters and published over 90 peer-reviewed papers. She is co-editor in chief of *The Clinical Teacher*, associate editor of the *Journal of Interprofessional Care* and deputy editor of the *Journal of Practice-based Learning*. Recent books are *Values-based Interprofessional Collaborative Practice*. (2012) and *Healthcare Professionalism at a Glance* (2015). In 2014 Jill was a Fulbright senior scholar and spent 4 months at the National Center for Interprofessional Practice and Education, University of Minnesota. During her stay she spoke at the Institute of Medicine in Washington DC on the nature of evidence for IPE.

**Ashlie Wilbon, MS, MPH, FNP-C**

Ashlie Wilbon, MS, MPH, FNP-C, is Managing Director, Quality Measurement at the National Quality Forum. Ashlie Wilbon brings over 10 years of experience in healthcare service delivery, including acute and primary care nursing, clinical education, and performance improvement. Ms. Wilbon joined NQF in 2009, where her work has focused on addressing quality improvement and performance measurement issues across healthcare settings through the NQF measure endorsement process and establishing guidance for performance measurement science. As Managing Director at NQF, Ms. Wilbon oversees the operations of the Quality Measurement department and has lead NQF's cost and resource use measurement efforts since 2010.



**James Witter, MD, PHD, FACR**

James P. Witter, MD, PhD, FACR, is a Medical Officer/Program Director of the Rheumatic Diseases Clinical Program at the National Institute of Arthritis and Musculoskeletal and Skin Diseases (NIAMS) at the National Institutes of Health (NIH), and has been the Chief Science Officer of the Patient-Reported Outcomes Measurement Information System (PROMIS), an initiative of the NIH Roadmap for Medical Research. He received his Ph.D. in Medical Microbiology/Immunology with a minor in Bacteriology from the University of Wisconsin Medical School, and his medical degree from the Medical College of Wisconsin. He is a Harvard-trained, board-certified rheumatologist who is a member of several ACR committees. Before joining NIH, Dr. Witter was a Medical Officer at the Food and Drug Administration (FDA), and a Staff Physician in Rheumatology at the National Naval Medical Center with an academic appointment at USUHS. He currently is an attending rheumatologist at the NIAMS CHC in Silver Spring. Dr. Witter has received multiple awards and honors in his Federal career, including the NIH Director's Award, and is a frequent presenter at professional rheumatology meetings. At NIAMS, Dr. Witter manages a wide-ranging research portfolio that supports patient-relevant clinical research and the design, development and execution of clinical trials and registries in rheumatic diseases in adults and children, such as rheumatoid arthritis, lupus, scleroderma, ankylosing spondylitis, psoriatic arthritis, gout, inflammatory myopathies, and vasculitis.



**INTEGRATED**healthcare  
Global Approaches to Integrated Care  
*Translating Science and Best Practices Into Patient-Centered Health Care Delivery*

## **PLANNING COMMITTEE MEMBERS AND MODERATORS**



### **Mary Ann McCabe, PHD, ABPP (Chair of Planning Committee)**

Mary Ann McCabe, PhD, ABPP, is a licensed clinical psychologist, Associate Clinical Professor of Pediatrics, George Washington University School of Medicine and Affiliate Faculty in Psychology at George Mason University. Dr. McCabe is currently President of the Society for Child and Family Policy and Practice (Division 37 of APA), and Chair of the APA Interdivisional Task Force on Child and Adolescent Mental Health. She is a Member of the Institute of Medicine Forum on Promoting Children's Cognitive, Affective and Behavioral Health and leads a collaborative group focused on health care reform. She is a past Chair and Member of the APA Board of Professional Affairs. She was previously the Director of the Office for Policy and Communications, Society for Research in Child Development, the Director of Health Psychology and Director of Training in Psychology at Children's National Medical Center. She serves on the Editorial Boards of *Clinical Practice in Pediatric Psychology* and *Advances in Child and Family Policy and Practice*. She received her BA from Clark University and her doctorate at the Catholic University of America, and completed a clinical internship and advanced fellowships through Harvard Medical School at Judge Baker Children's Center, Children's Hospital of Boston and Dana Farber Cancer Institute.

### **Rinad Beidas, PHD**

Dr. Beidas holds a bachelor of arts in psychology from Colgate University and a doctorate of philosophy in psychology from Temple University. Dr. Beidas is currently a senior fellow in the Leonard Davis Institute, as well as a fellow in the NIMH funded Implementation Research Institute (IRI). She is also an alumnus fellow of the NIH funded Training Institute in Dissemination and Implementation Research in Health (TIDIRH), and the NIMH funded Child Intervention and Prevention Services (CHIPS) Fellowship. Dr. Beidas's research centers on the dissemination and implementation of evidence-based practices (EBPs) for youth in community settings. Dr. Beidas is particularly interested in understanding how to most effectively support therapists, organizations, and systems in the implementation of EBPs and in investigating how contextual variables such as individual, organizational, and systems-level facilitate implementation. Current work involves an NIMH funded K23 MH099179 project that prospectively investigates the impact of a policy mandate on implementation of EBPs in outpatient mental health services for youth in the public sector (Policy to Implementation; P2I). Clinically, Dr. Beidas's expertise is in the cognitive-behavioral treatment of child and adolescent anxiety.

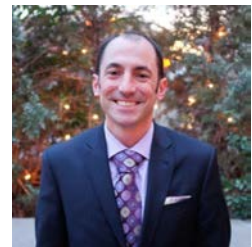


### **Anne Kazak, PHD, ABPP**

Anne E. Kazak, PhD, ABPP, is co-Director of the Center for Healthcare Delivery Science at Nemours Children's Health System, based at A. I. du Pont Hospital for Children in Wilmington, Delaware. She is also the co-Director of the Center for Pediatric Traumatic Stress, a Treatment and Services Adaptation Center in the National Child Traumatic Stress Network, the Editor-in-Chief of the *American Psychologist* and of *Health Psychology*. Dr. Kazak is a licensed psychologist (DE, PA) and Professor of Pediatrics at the Sidney Kimmel Medical School of Thomas Jefferson University and Adjunct Professor of Psychology at the University of Delaware. Dr. Kazak's experience as a clinician, researcher and administrator have helped to advance integrated (medical, behavioral) care for children and families from a systems perspective. She is a frequent consultant and reviewer on national and international projects related to pediatric psychology. Dr. Kazak is the recipient of many research grants and several awards, including the Cummings American Psychological Cummings PSYCHE Prize (2009) for integrated care. Dr. Kazak received her Ph.D. in Clinical-Community Psychology from the University of Virginia and completed her internship training at Yale University School of Medicine, Department of Psychiatry. Her undergraduate degree was awarded by Smith College.

### **Benjamin Miller, PSYD**

Dr. Miller is an Assistant Professor in the Department of Family Medicine at the University of Colorado Denver School of Medicine where he is the Director of Eugene S. Farley, Jr. Health Policy Center. Dr. Miller is a principal investigator on several federal grants, foundation grants, and state contracts related to comprehensive primary care and mental health, behavioral health, and substance use integration. He leads the Agency for Healthcare Research and Quality's Academy for Integrating Behavioral and Primary Care project as well as the highly touted Sustaining Healthcare Across Integrated Primary Care Efforts (SHAPE) project. He has published extensively in the area of integrated behavioral health and primary care.



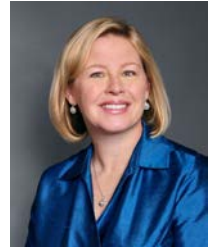
### **Bonnie Nastasi, PHD**

Bonnie Kaul Nastasi, PhD (Kent State University, 1986, School Psychology), is a Professor of Psychology at Tulane University, where she co-directs a trauma specialization in the School Psychology PhD Program. Her research focuses on the use of mixed methods designs to develop and evaluate culturally appropriate assessment and intervention approaches for promoting mental health and reducing health risks such as sexually transmitted infections, both within the US and internationally. She has worked in Sri Lanka since 1995 on development of school-based programs to promote psychological well-being, and directed a multi-country study of psychological well-being of children and adoles-

cents with research partners in 12 countries from 2008-2013. She was one of the principal investigators of an interdisciplinary public health research program to prevent STIs among married men and women living in the slums of Mumbai, India from 2002-2013. Dr. Nastasi has written extensively about her research and development work. She is active in the promotion of child rights and social justice within the profession of School Psychology. She is past-president of APA's Division 16 and past co-chair of APA's Committee on International Relations in Psychology. She is President-elect for ISPA and incoming Division 16 representative to APA's Council of Representatives.

#### **Nancy Ruddy, PhD, ABPP**

Dr. Nancy Ruddy received her PhD in clinical psychology from Bowling Green State University in 1991. She spent the first 22 years of her career in medical education, first at the University of Rochester School of Medicine and Dentistry from 1991-2000. After relocating to New Jersey in 2000, she taught at Hunterdon Family Practice Residency from 2001-2008, and at Mountainside Family Practice from 2008-2013. Throughout her academic career she focused on training medical and mental health professionals to integrate behavioral health care into primary care settings. Since 2013 she has worked in health care marketing and communications with a focus on improving patient engagement, health behaviors and medication adherence. She was the author of the 2008 APA Books publication *The Collaborative Psychotherapist*. She was awarded the Health Psychology (Division 38) Timothy B. Jeffrey Memorial Award for Outstanding Contributions to Clinical Health Psychology in 2013 and named a Fellow of the Division of Health Psychology in 2014.



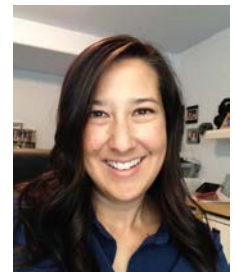
#### **Brian Smedley, PhD**

Brian D. Smedley is Executive Director of the National Collaborative for Health Equity, a project that connects research, policy analysis, and communications with on-the-ground activism to advance health equity. From 2008 to 2014, Dr. Smedley was Vice President and Director of the Health Policy Institute of the Joint Center for Political and Economic Studies, a research and policy organization focused on addressing the needs of communities of color. Formerly, Dr. Smedley was Research Director and co-founder of a communications, research and policy organization, The Opportunity Agenda, and was a Senior Program Officer at the Institute of Medicine (IOM), where he served as Study Director for several IOM reports on health disparities.



#### **Kari Stephens, PhD**

Kari A. Stephens, PhD, is a practicing clinical psychologist, clinical researcher, and biomedical informaticist. She is an Assistant Professor in the Department of Psychiatry and Behavioral Sciences at the University of Washington with an adjunct appointment in Biomedical Informatics and Medical Education and the Associate Director of the Behavioral Science and Technology Program. Her research currently focuses on two areas: dissemination of evidence-based behavioral practices into medical settings and developing data sharing methods and tools to leverage electronic health data for research. Her research centers on disadvantaged populations and primary care settings and has been funded by the American Psychological Association, National Institutes of Health, Center for Disease Control and Prevention, Department of Defense, and other organizations. She actively collaborates with the Division of Integrated Care and Public Health, the Institute of Translational Health Sciences, and the eScience Institute. She trains UW and community based clinical professionals and trainees in evidenced based psychological practices and mentors biomedical informatics trainees in data science based health research methods. She enjoys treating patients at the UW Center for Pain Relief and her clinical expertise includes evidenced based psychotherapy including cognitive and behavioral based therapies particularly addressing trauma, depression, anxiety, chronic pain, and addiction.



#### **Antonette Zeiss, PhD**

Antonette M. Zeiss, PhD, retired at the end of 2012, after serving since May 2010 as the Chief Consultant for Mental Health Services at the Department of Veterans Affairs Central Office (VACO), first as the Acting lead in that role and then as the selected official. She completed her PhD in Clinical Psychology at the University of Oregon in 1977 and worked in VA from 1982 to 2012, after working as a faculty member at Arizona State University and Stanford University. Her previous VA positions were at the VA Palo Alto Health Care System, until coming to VACO in September 2005 as the Deputy Chief Consultant for the Office of Mental Health Services. Among her major VACO responsibilities was to support effective implementation of the Mental Health Strategic Plan, which ultimately led to the VA Uniform Mental Health Services in VA Medical Centers and Clinics Handbook, thus enhancing and transforming VA mental health services. She



has published extensively, particularly on mental health policy and training, on interprofessional teams and health care service delivery, and on depression treatment and risk factors. She has received numerous awards throughout her career. Most recently, these have included a United States Presidential Rank Award, Meritorious, for her service as a government senior executive; a Lifetime Achievement Award from the Association for Behavioral and Cognitive Therapies; and a Lifetime Achievement Award from the American Psychological Association in July 2013.



# INTEGRATED healthcare

Global Approaches to Integrated Care  
*Translating Science and Best Practices Into Patient-Centered Health Care Delivery*

## Schedule At A Glance

### **Monday, November 2, 2015**

5:30—7:30 PM

Opening Reception

### **Tuesday, November 3, 2015**

8:00—8:45 AM

Breakfast

8:45—9:00 AM

Welcome and Overview of Summit

9:00—9:45 AM

Opening Keynote: Reynaldo Holder, MD, MSc

9:45—10:45 AM

Panel #1: Global Models of Integrated Care

10:45—11:00 AM

Break

11:00 AM—12:00 PM

Panel #2: Models of Financing

12:00—12:45 PM

Lunch

12:45—1:30 PM

Keynote: Susan Dopson, PHD, MSC, BSC

1:30—2:30 PM

Panel #3: Models of Education/Training

2:30—3:30 PM

Panel #4: Models for Dissemination of Evidence-Based Practices/  
Systems Change

3:30—3:45 PM

Break and Transition to Groups

3:45—5:00 PM

Working Group Session #1

5:00 PM

Closing Remarks

### **Wednesday, November 4, 2015**

8:00—8:45 AM

Breakfast

8:45—9:00 AM

Welcome

9:00—9:45 AM

Keynote: Adewale Troutman, MD, MPH, CPH

9:45—10:45 AM

Panel #5: Health Promotion, Prevention and Wellbeing

10:45—11:00 AM

Break

11:00 AM—12:00 PM

Panel #6: Demographics, Culture and Health Disparities

12:00—12:45 PM

Lunch

12:45—1:30 PM

Keynote: John Fortney, PHD

1:30—2:30 PM

Panel #7: Measurement of Cost, Quality and Outcome Evaluation

2:30—3:30 PM

Panel #8: Emerging Technologies

3:30—3:45 PM

Break and Transition to Groups

3:45—5:00 PM

Working Group Session #2

5:00 PM

Closing Remarks

### **Thursday, November 5, 2015**

8:00—8:45 AM

Breakfast

8:45—9:00 AM

Welcome

9:00—9:45 AM

Keynote: Dave deBronkart

9:45—10:30 AM

Panel #9: Summaries—Work Group Recommendations for Next Steps

10:30—10:45 AM

Break

10:45—11:30 AM

Panel #10: Reactions/Reflections—Special Populations

11:30 AM—12:15 PM

Panel #11: Reactions/Reflections—International Perspectives

12:15—12:30 PM

Looking Forward, Next Steps

12:30 PM

Adjourn



AMERICAN  
PSYCHOLOGICAL  
ASSOCIATION