

Webinar Format

The webinar will begin shortly.

- To minimize background noise, participants will be muted throughout the webinar. If you would like to submit a question or comment to the presenters, please type it into the questions pane on the webinar control panel. The presenters will answer questions as time allows.
- If you have technical difficulties during the webinar, please contact Shannon Doty (sdoty@apa.org).
- If you have issues viewing/hearing the webinar, logout and dial-in using the information in your confirmation email

United States: +1 (213) 929-4232 Access Code: 952-742-871

COVID-19 Town Hall

*With a Special Focus on Social Issues and Disparities
in the Nation's Response to COVID-19*

Dr. Sandra L. Shullman, 2020 APA President

Dr. Arthur C. Evans, Jr., APA CEO

Featuring special guest, **Dr. Brian Smedley,**
APA's Chief of Psychology in the Public Interest

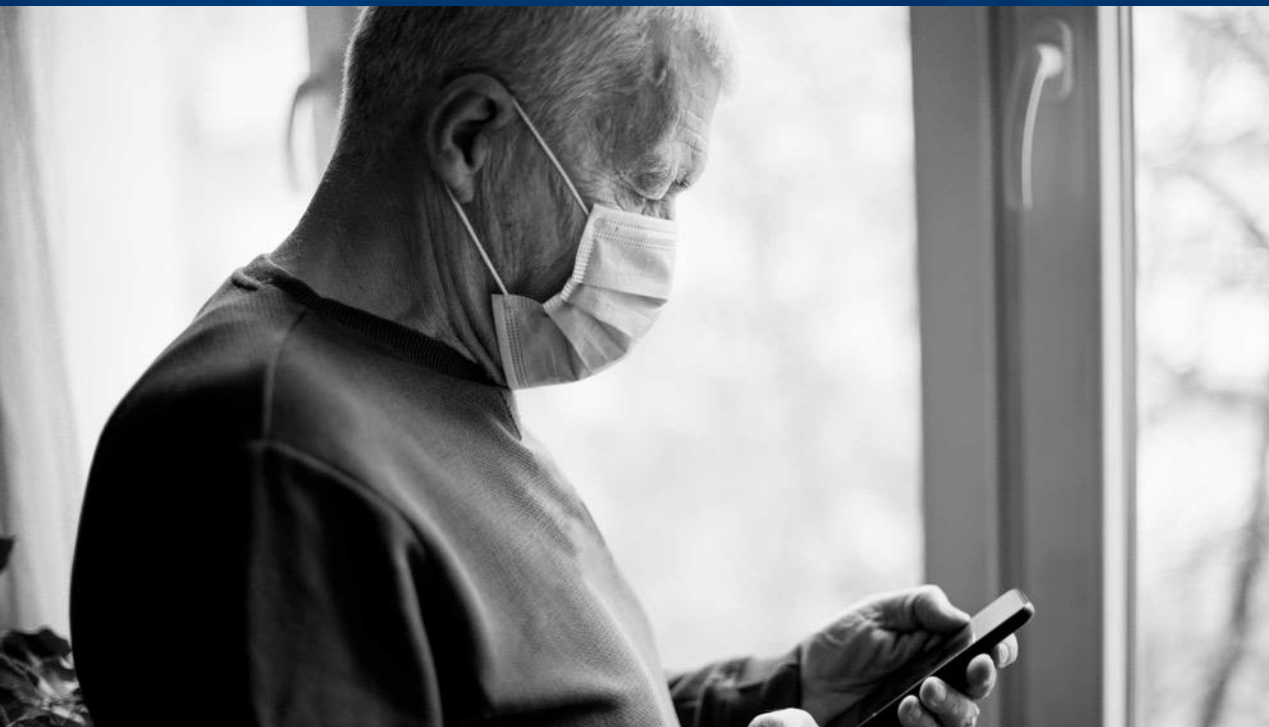
American Psychological Association

APRIL 29, 2020

Time to...

- **CONNECT**
- **SUPPORT**
- **SHARE**
- **ASK**
- **EXPLORE**

The Current Challenge



Utilize psychology to make a positive impact on critical societal issues.

Elevate the public's understanding of, regard for, and use of psychology.

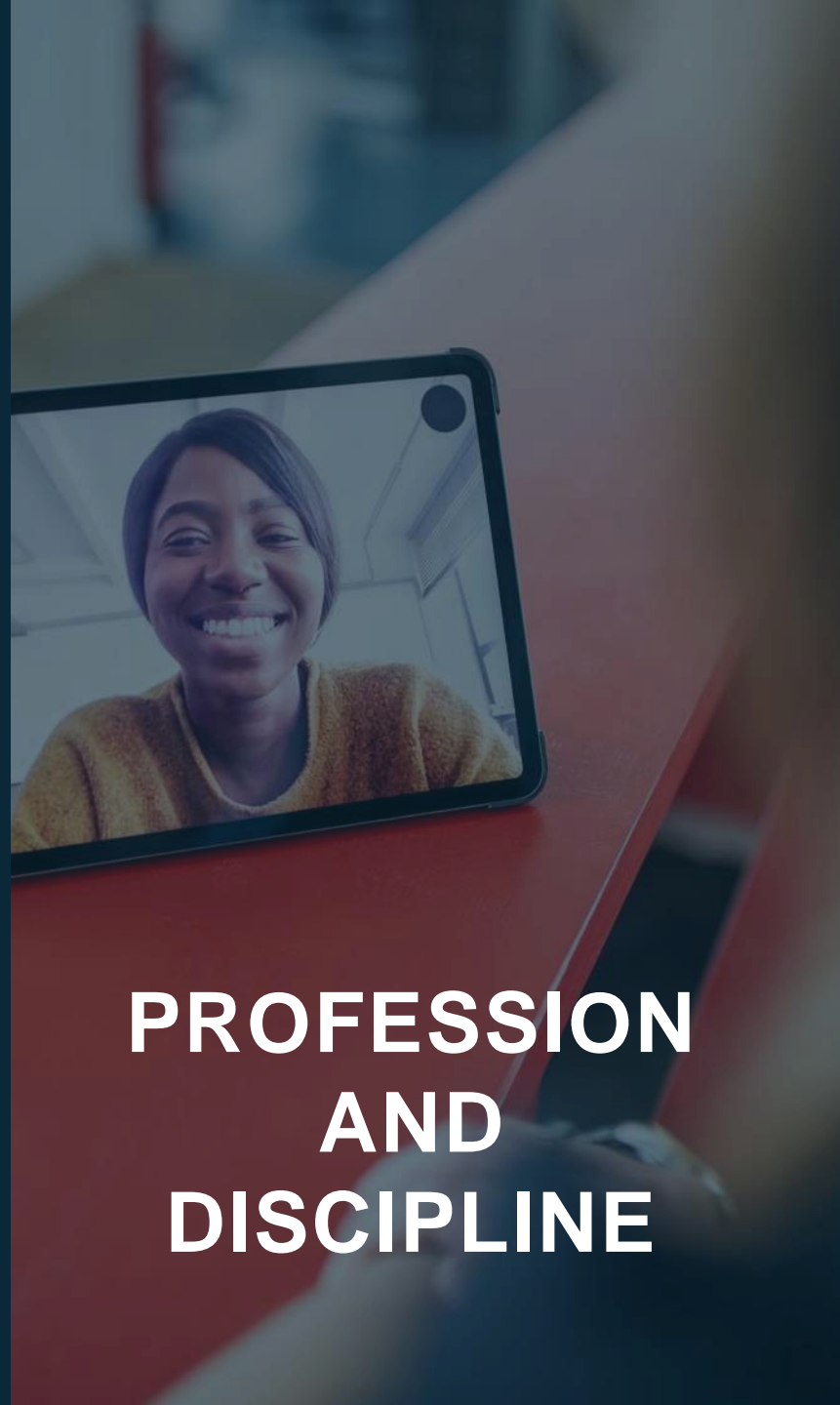
Prepare the discipline and profession of psychology for the future.

Strengthen APA's standing as an authoritative voice for psychology.





ASSOCIATION



**PROFESSION
AND
DISCIPLINE**



**POLICYMAKERS
AND
PUBLIC**

#EquityFlattensTheCurve

Centering Equity in the COVID-19 Pandemic Response

Brian Smedley, PhD,

APA Chief of Psychology in the Public Interest

Members of the 2020 Board for the Advancement of Psychology in the Public Interest (BAPPI)

- **Shavonne J. Moore-Lobban, PhD (Chair)**
- **Alette C. Coble-Temple, PsyD (Chair-Elect)**
- **June W. J. Ching, PhD, ABPP**
- **Milton A. Fuentes, PsyD**
- **Babe Howell, JD**
- **Martin Y. Iguchi, PhD**
- **Kimberly E. Hiroto, PhD**
- **Iore m. dickey, PhD**
- **Wendy M.K. Peters, PhD**
- **Scott J. Hunter, PhD**

COVID-19 Exposes Inequities

- Asian Americans have been targeted by hate speech and actions in public and virtual spaces
- African-American, Pacific Islander, and Latinx communities are at greatest risk for infection and mortality, yet experience significant financial, linguistic, and geographic barriers to access to care
- These communities disproportionately work in essential—yet often low-paying—jobs
- Media reports focus on the heightened risks these communities face due to a high rate of underlying chronic conditions—without educating audiences about the structural inequities that cause them.

COVID-19 Exposes Inequities

- Older adults in marginalized groups are most likely to lack resources during the crisis and to need healthcare and community services.
- Aging services also are saddled by the racial inequality that marks America's COVID-19 crisis, as this sector disproportionately employs and serves people of color.
- Direct care workers, for instance, are a predominant segment of the aging services workforce that provides daily support to older people and individuals with disabilities across settings—placing them on the front lines of the pandemic.
- These low-wage workers—who primarily are women, people of color and immigrants—often lack paid leave and do not earn enough to weather even a modest disruption in pay.

COVID-19 Exposes Inequities

- People with disabilities may not be able to physically distance from others or take other protective measures
- Similarly, people with low incomes may not be able to physically isolate, increasing risks compounded by challenges such as safe, stable housing, access to healthy food, or resources to withstand economic downturns
- Immigrants face unique challenges that may increase their risks and chances of poor outcomes if infected. Legal immigrants may fear accessing public health or social services in light of the new “public charge” rule, and those without documentation may fear detention or deportation
- Institutionalized populations—including people who are incarcerated and migrant families in detention centers—face heightened risks

Why #EquityFlattensTheCurve

- Coronavirus-related health risks, burdens, experiences and outcomes aren't the same for everyone
- To flatten the curve we must tackle the bias, stigma, and discrimination at the root of these inequities and ensure that all strategies and solutions are delivered equitably

How can psychology inform #EquityFlattensTheCurve?

- Help key audiences (elected officials, community leaders, journalists) understand the health and mental health needs of stigmatized populations
- Help these audiences understand how bias, stigma, and discrimination complicate the pandemic response—and how to mitigate them
- Help communities to build social cohesion and tolerance, even as we're physically distancing
- Use the crisis to move our nation closer to our stated egalitarian goals

Goals of #EquityFlattensTheCurve

- Connect the voices of health equity, public health, psychology to educate policymakers and leaders regarding equity-enhancing practices and policies
- Reduce bias, stigma, and discrimination related to the COVID-19 pandemic (e.g., bias in access to testing)
- Promote social cohesion, inclusion, and equity as necessary to help mitigate the virus' spread (in both messaging and interventions)
- Promote policies and practices that reduce inequity and address public health needs of diverse populations over short- and long-term (e.g., data collection, expand safety net)

Together we aim to build...



WHAT

Provide a repository of timely and accurate #EFTC supporting evidence, examples and best practices, #EFTC advancing narratives and news stories, and external links to other resources that advance #EFTC goals



WHO

Build a highly collaborative, constantly adapting network with diverse points of view, experiences, and expertise that connects and collaborates, shares resources and learnings, builds partnerships, and crafts innovative solutions to advance #EFTC goals



HOW

Provide capacity building processes, tools and resources to facilitate action, and to seed and facilitate activities aimed at advancing #EFTC goals (e.g., #NoSilentBystander, #ReleaseTheData)

A Call to Action

#EquityFlattensTheCurve

Coming up...

- Join Twitter chat using
#EquityFlattensTheCurve @ 1:00pm ET on
Thursday, May 7, 2020
- Development of a **Virtual Resource Center**
- **Shareable information and tools** on data
collection and reporting



AMERICAN
PSYCHOLOGICAL
ASSOCIATION

LET'S HAVE A CONVERSATION

Please type your question into the Q&A pane on the webinar control panel. The presenters will answer questions as time allows.

For COVID-19 Information & Resources

www.apa.org/covid-19

<https://www.apa.org/topics/covid-19/health-disparities>

Article: How can we make equity a key component of the COVID-19 response?

<https://www.apa.org/topics/covid-19-bias>

Fact Sheet: Combatting bias and stigma related to COVID-19

<https://www.apa.org/research/action/speaking-of-psychology/index>

Podcast: Why is COVID-19 disproportionately affecting Black and Latino Americans? *with Dr. Brian Smedley*

Please complete the survey that you will receive at the conclusion of this webinar.

Additional questions or comments?
Email membership@apa.org

Please [register here](#) for upcoming town halls in this series.
Wednesdays at 1pm EST through the first week of June.

UP NEXT WEEK
May 6, 2020

**APA Member Town Hall, with a special focus on conducting
and applying psychological research during the pandemic**

***Featuring Dr. Jaime “Jim” Diaz-Granados,
APA’s Deputy CEO and acting Chief Scientific Officer***