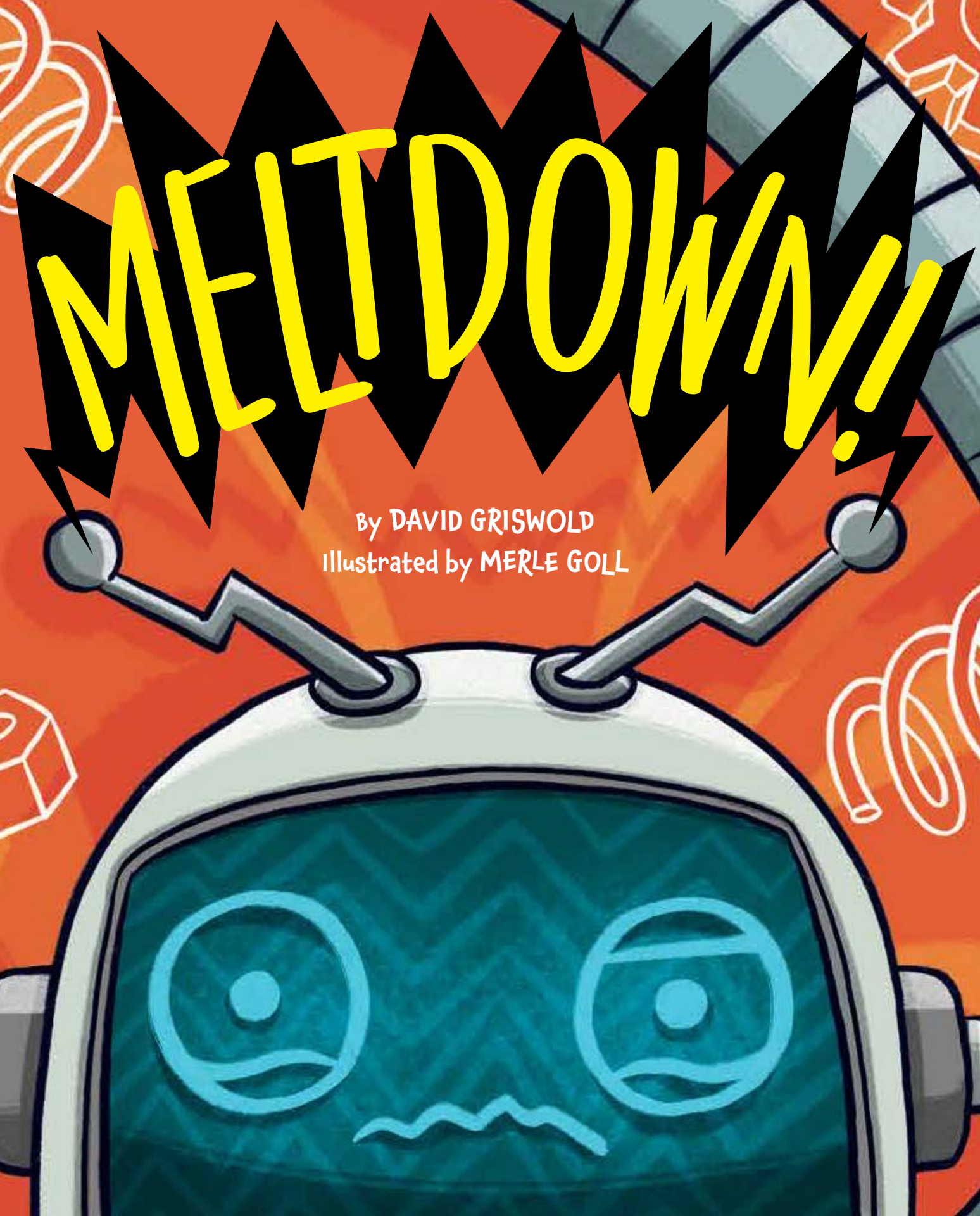


# MELTDOWN!

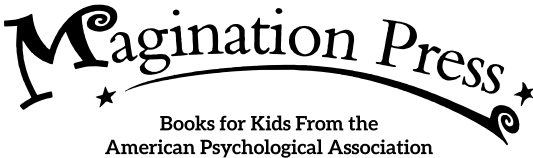
By DAVID GRISWOLD  
Illustrated by MERLE GOLL





To all those who help me press  
that reset button—DG

To my lovely (and not so) little humans  
Ida and Lilja—MG



Story text copyright © 2024 by David Griswold. Illustrations copyright © 2024 by Merle Goll.  
Reader’s Note text copyright © 2024 by Magination Press. All rights reserved. Except as  
permitted under the United States Copyright Act of 1976, no part of this publication may be  
reproduced or distributed in any form or by any means, or stored in a database or retrieval  
system, without the prior written permission of the publisher.

Magination Press is a registered trademark of the American Psychological Association.  
Order books at [maginationpress.org](http://maginationpress.org), or call 1-800-374-2721.

Book design by Christina Gaugler

Printed by Sonic Media Solutions, Inc., Medford, NY

Library of Congress Cataloging-in-Publication Data

Names: Griswold, David, 1985- author. | Goll, Merle, illustrator.  
Title: Meltdown! / by David Griswold; illustrated by Merle Goll.  
Description: Washington, DC : Magination Press, [2024]  
Series: “American Psychological Association.”  
Summary: Humorously demonstrates how robots cope with big emotions.  
Identifiers: LCCN 2023006580 (print) | LCCN 2023006581 (ebook) | ISBN 9781433842573  
(hardback) | ISBN 9781433843082 (ebook) Subjects: CYAC: Robots—Fiction. | Emotions—Fiction.  
| Adjustment—Fiction. | Humorous stories. BISAC: JUVENILE FICTION / Robots | JUVENILE  
FICTION / Social Themes / General (see also headings under Family) | LCGFT: Humorous fiction.  
| Picture books. Classification: LCC PZ7.1.G758 Me 2024 (print) | LCC PZ7.1.G758 (ebook) | DDC  
[E]—dc23 LC record available at <https://lcn.loc.gov/2023006580> | LC ebook record available at  
<https://lcn.loc.gov/2023006581>

Manufactured in the United States of America  
10 9 8 7 6 5 4 3 2 1



# MELTDOWN!



By DAVID GRISWOLD  
Illustrated by MERLE GOLL

Magination Press • Washington, DC • American Psychological Association



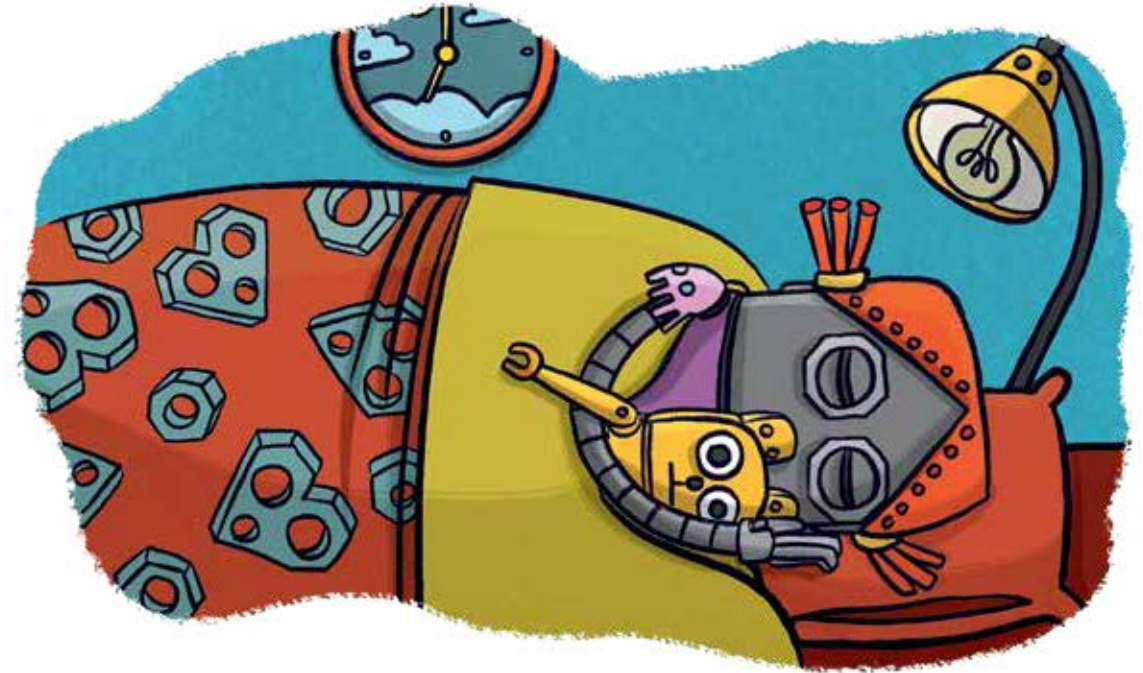
You may already know a thing or two about robots.



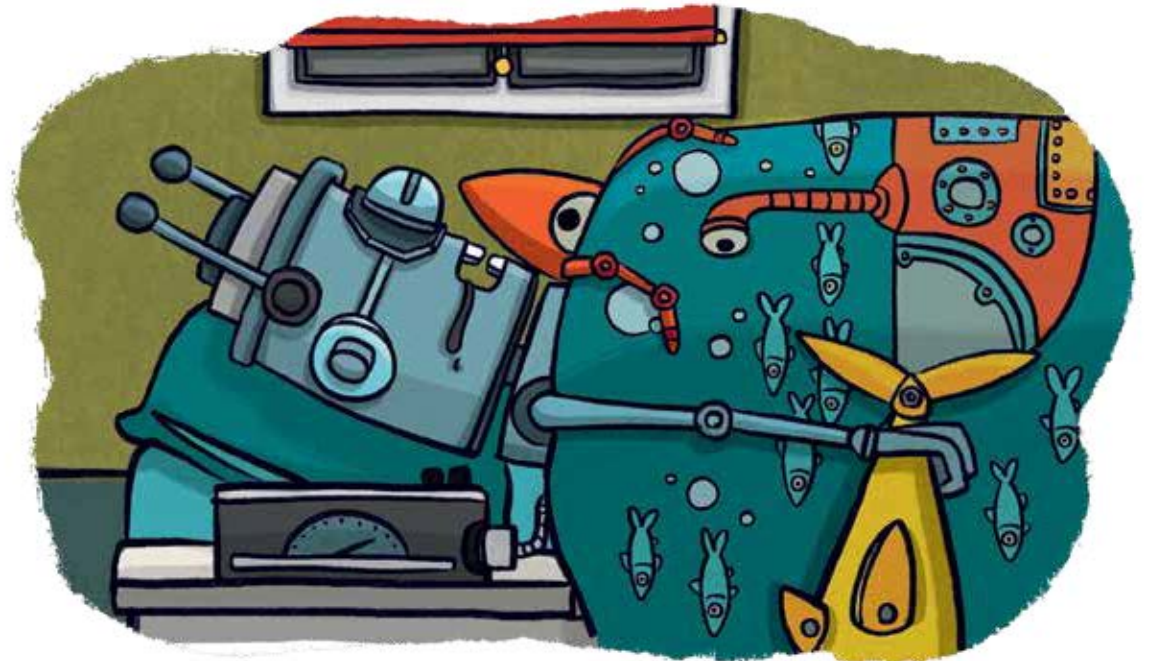
For instance, robots hardly **EVER** stay up past their bedtime.





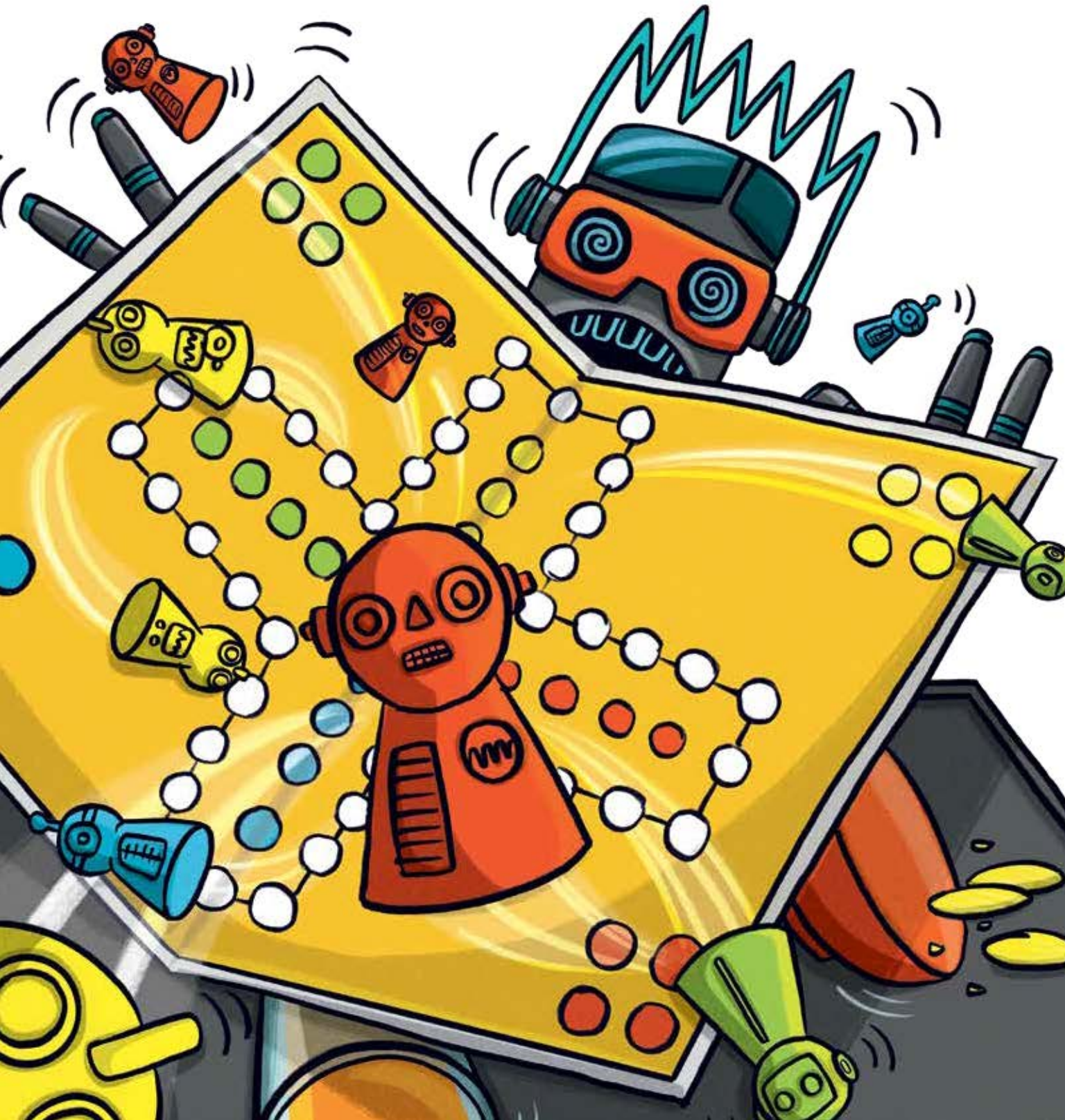


They power down **RIGHT** at seven o'clock.





When they're upset, robots **RARELY** flip out.



They use their programming language.

